



Complete Curb Products & Dynasonics Inc.
7229 Fairview St. Houston TX. 77041
P. 713-690-1622 F:713-690-1945

CCP-SRA
"SONA" Rail Aluminum

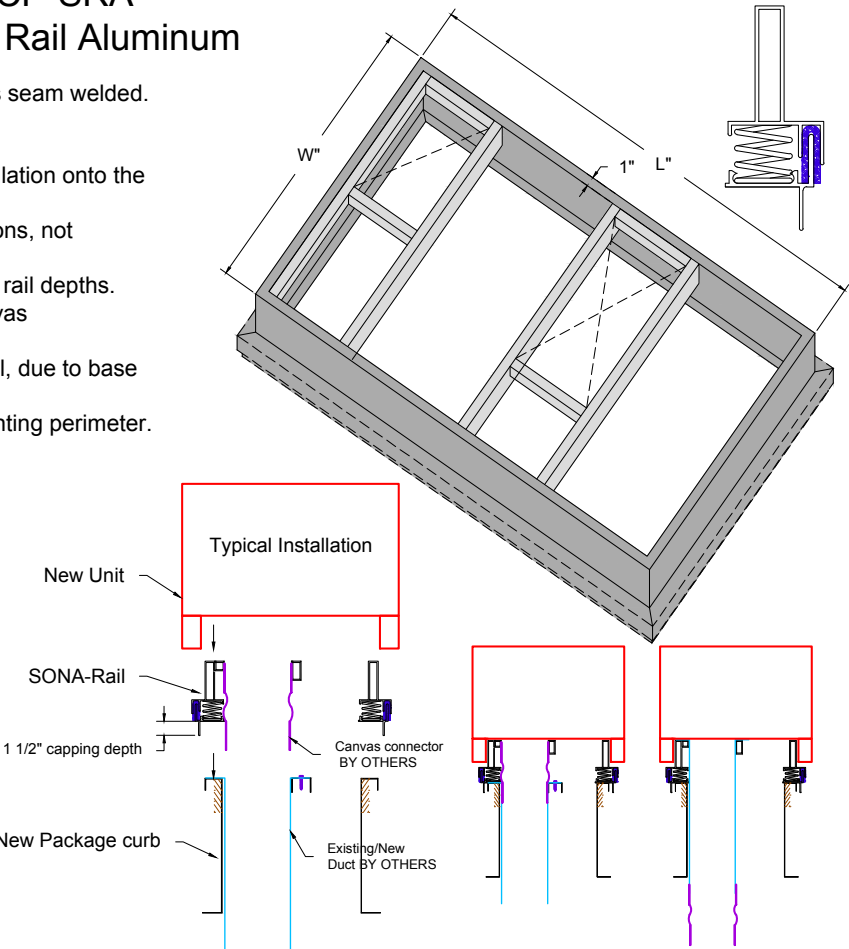
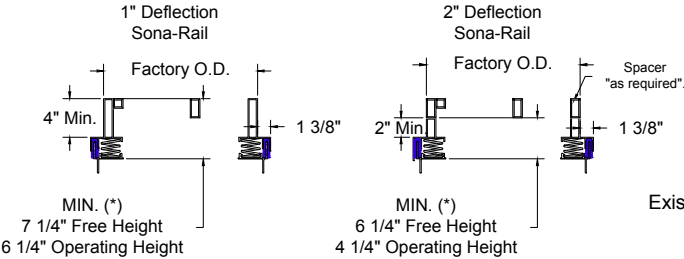
Standard Features:

- Extruded 6063-T6 alloy .125" wall thickness upper & lower sections seam welded.
- 1" or 2" deflection, powder coated springs factory installed.
- Corners mitered & seam welded.
- 1/4" x 1 1/2" neoprene gasket material supplied loose for field installation onto the top mounting surface, prior to unit installation.
- Closed cell neoprene gasket material between upper & lower sections, not exposed to elements, insuring weather resistance.
- Extruded Alum. spacer welded on top for units with increased base rail depths.
- Extruded alum. cross channels as required & for field supplied canvas connections

Note: *Actual Free height & Operating height varies by unit type & model, due to base rail installation depths.
Base/Shipping perimeter is approx.. 3" greater than the factory top mounting perimeter.

Optional Features:

1. Gasket material for existing package curb.
2. Splice kits for field assembly & easy shipment.
3. Non-rated unit hold-down bracket & cable tie system (submittal drawing required).



Specification & Dimensions					
Quantity	RTU Model # or L" x W"	Unit Operating weight	Desired Deflection (1" OR 2")	Tag#	Options