



INTRODUCTION TO FARM FOUNDATION®

A 501(C)(3) NON-PROFIT AT THE INTERSECTION OF
FOOD & AGRICULTURE



Farm Foundation is an
ACCELERATOR
of practical solutions for agriculture.

We accelerate
PEOPLE AND IDEAS
into
ACTION.



OUR MISSION AND VISION GUIDE OUR WORK

MISSION:

To **build** trust and understanding at the intersections of agriculture and society.

VISION:

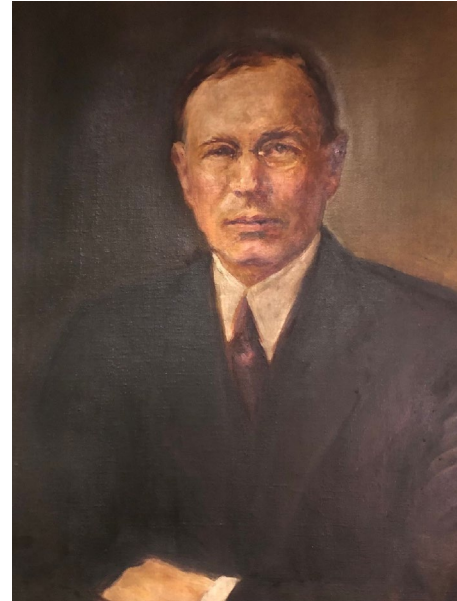
To **build** a future for farmers, our communities and our world.



BUILDING ON OUR PAST

- **Innovation and education are central to our identity.**
Our founders were among the leading agricultural minds of their day. Our work is fueled by their relentless passion to improve food and ag.
- We have an enduring history in Chicagoland.
Now it is time to put down roots in new and unique ways.
- **Farm Foundation works throughout the entire supply chain.**
From the farm to the consumer, we strive to provide practical solutions for some of the most crucial issues in food and agriculture.
- **Our history is long, but our future is just beginning.**
Our non-partisan, objective, connection-building approach is more relevant today than ever. It makes us uniquely suited to address the most interesting and impactful issues in food and agriculture.

The Founders of Farm Foundation



Alexander Legge
International Harvester
C.E.O.

Frank Lowden
IL Governor



ANCHORED WITH A RICH HISTORY

Founding Era 1930s & 40s	Post Founder Era 1950s & 60s	Round Table Integration 1970s & 80s	Modern Era 1990s through 2015	Current & Future What's Next?
<p>"...to improve conditions of life for the farming and rural population with adequate economic returns, social, educational and cultural advantages." ~Founding vision, Legge & Lowden</p>	<p>"Be the yeast... stimulate action where research leaves off...with regional cooperation." ~Taylor</p> <p>Rural communities, economics and policy focus</p>	<p>Foundation for American Agriculture (FFAA) founded in 1945 by Dana Bennet</p> <p>FFAA dissolved and integrated into Farm Foundation in 1974-75 as a key program</p>	<p>Mission: "to improve the economic and social prospects of agriculture and rural communities"</p> <p>Shifts with Round Table, Steering Committee, Membership Committee</p>	<p>2020: Accelerator</p> <p>Vision: Building a future for farmers, our communities and our world</p> <p>Mission: Building trust and understanding at the intersections of agriculture and society</p>

Sources: Farm Foundation: 75 years as a catalyst to agriculture and rural America; Farm Foundation Board Minutes; 2020 Strategic 5 Year Plan

WE ARE A MULTI-STAKEHOLDER ORGANIZATION – OUR BOARD

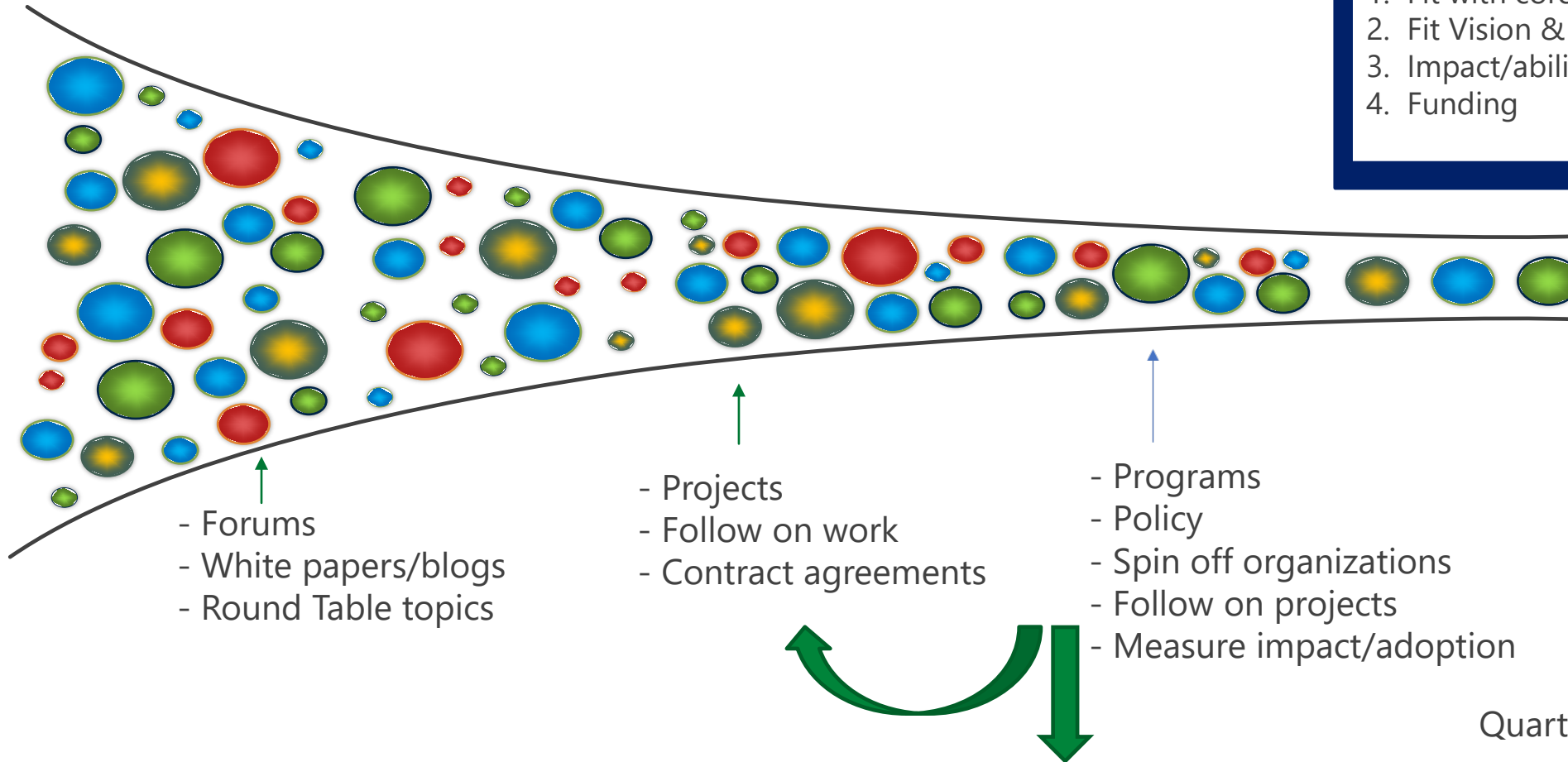


- **Jerome Lyman**, McDonald's Corporation, *retired*, Chair
- **Dan Basse**, AgResource Company, Vice Chair
- **Elizabeth Hund**, U.S. Bank, *retired*, Treasurer
- **Larkin Martin**, Martin Farm, Past Chair
- **Chuck Ahlem**, Charles Ahlem Ranch
- **Cheri DeJong**, AgriVision Farm Management
- **John Foltz**, Ohio State University
- **David Gilmore**, Deere & Company
- **Gregg Hillyer**, *Progressive Farmer*
- **George Hoffman**, Restaurant Services Inc.
- **Robert Jones**, University of Illinois at Urbana-Champaign
- **Jackie Joyner-Kersee**, Jackie Joyner-Kersee Foundation
- **A.G. Kawamura**, Orange County Produce
- **Kristin Kroepfl**, Quaker North America
- **Thayne Larson**, Bestifor Farms
- **Andrew LaVigne**, American Seed Trade Association
- **Brad Lubben**, University of Nebraska
- **Klaas Martens**, Martens Farm and Lake View Organic Grain
- **Angela Caddell**, Burlington Northern Santa Fe Railroad
- **Sylvester Miller II**, Indigo Ag
- **William Nelson**, William J. Nelson, LLC
- **Nathan Rudgers**, Farm Credit East
- **Ryan Schohr**, Schohr Ranch
- **Mary Snapp**, Microsoft Philanthropies
- **Mike Torrey**, Mike Torrey Associates
- **Darci Vetter**, Edelman
- **Craig Yunker**, CY Farms

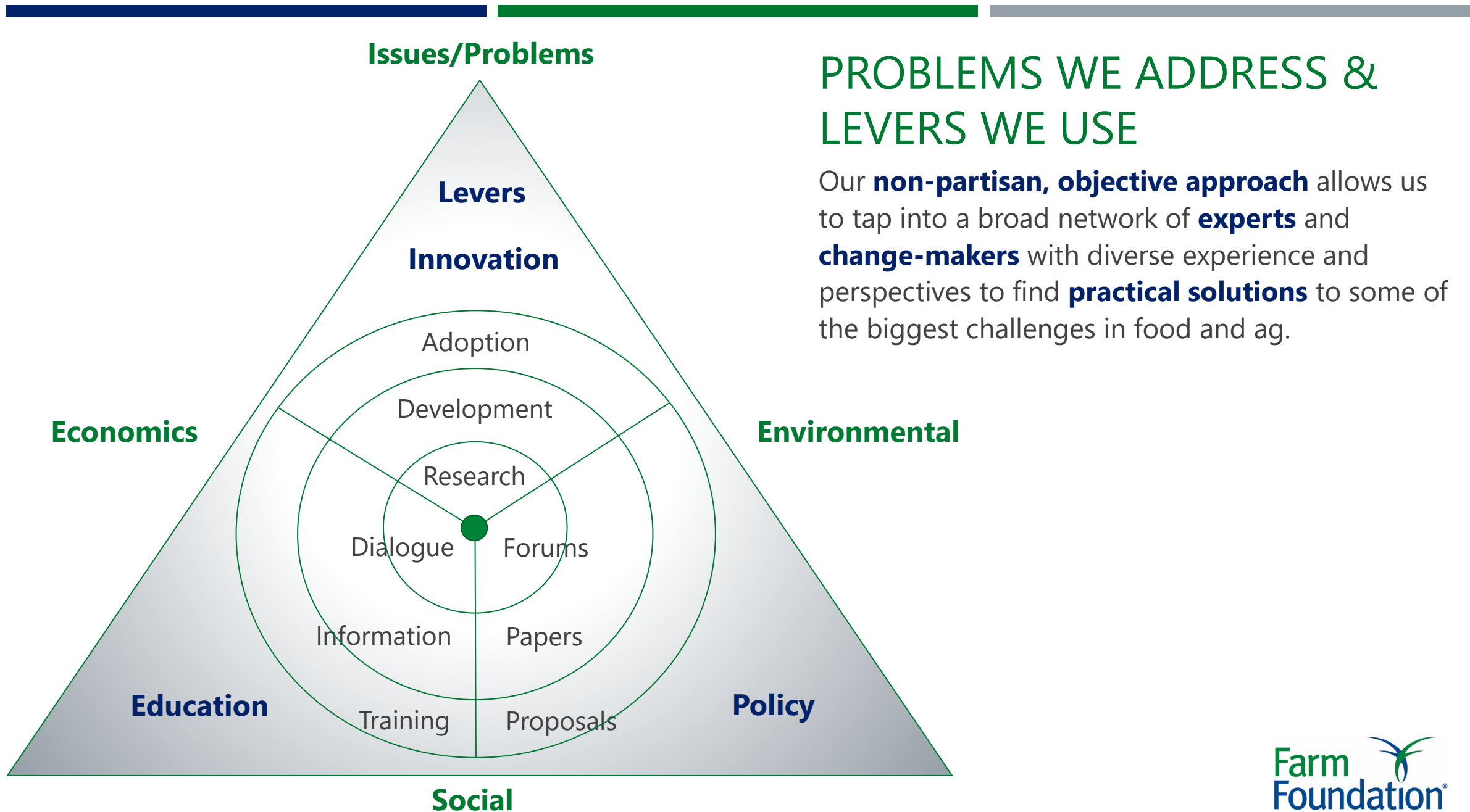
ACCELERATOR FUNNEL

PROJECT SELECTION CRITERIA

1. Fit with core problems & levers
2. Fit Vision & Mission, uniquely qualified
3. Impact/ability to accelerate
4. Funding

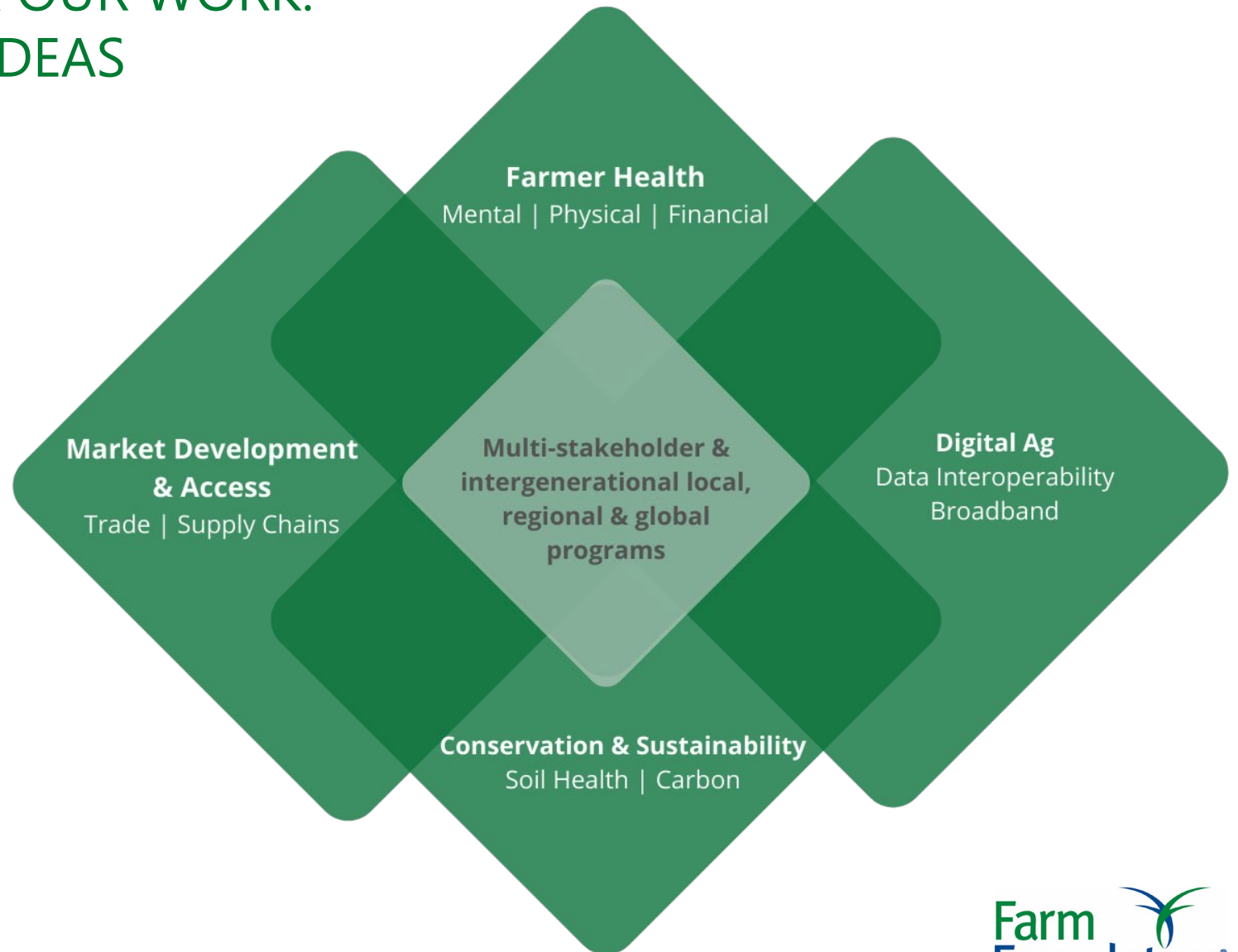


We seek work that we can **sustain and accelerate**. Some work will be discontinued.



STRATEGIC PRIORITIES FOR OUR WORK: ACCELERATING PEOPLE & IDEAS

- **Building a future** for farmers, our communities and our world.
- **Building trust and understanding** at the intersections of agriculture and society.
- **Building momentum** with the new **Innovation and Education Center** for local, regional and global in-person and virtual programs.



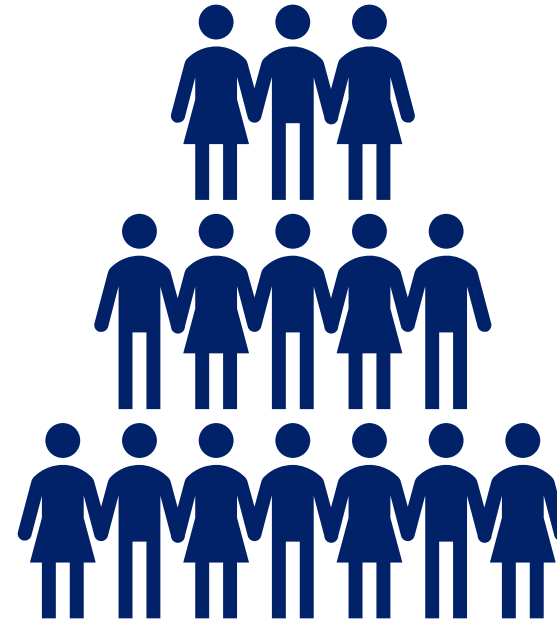
ACCELERATING PEOPLE: CORE PROGRAMS

■ Round Table

- Invitational discussion group of cross-sectional thought leaders
- Meets 2x/year

■ Next Generation

- Cultivators
- Congressional Fellows
- Young Farmer Accelerators
- Young Agri-Food Leaders
- Agricultural Scholars
- Ag Economics Fellow (New for 2021)





NEXT GENERATION PROGRAMS

- Farm Foundation has a suite of multi-stakeholder programs to **accelerate the next generation of agricultural leaders**
 - Cultivators (~6, 2x/year)
 - Agricultural Scholars (~10)
 - Congressional Fellows (~10)
 - Young Farmers (~15)
 - Young Agri-Food Leaders (~10)
- ~40-50 young leaders in our 2020 programs; nearing ~100 alumni of our programs; **~150 young leaders total!**

WE INVITE YOU TO ENGAGE WITH US!

Here are just a few ways to get started:

- **Share** your expertise—or connect us with great speakers
 - Farm Foundation Forums
 - Farm Foundation Round Table Meetings
 - Other conferences and events
- **Join** us to work on a specific ongoing project or program
- **Collaborate** to identify new opportunities to solve problems in agriculture
- **Support** our work by becoming a Farm Foundation Seeder



Whatever your
PASSION

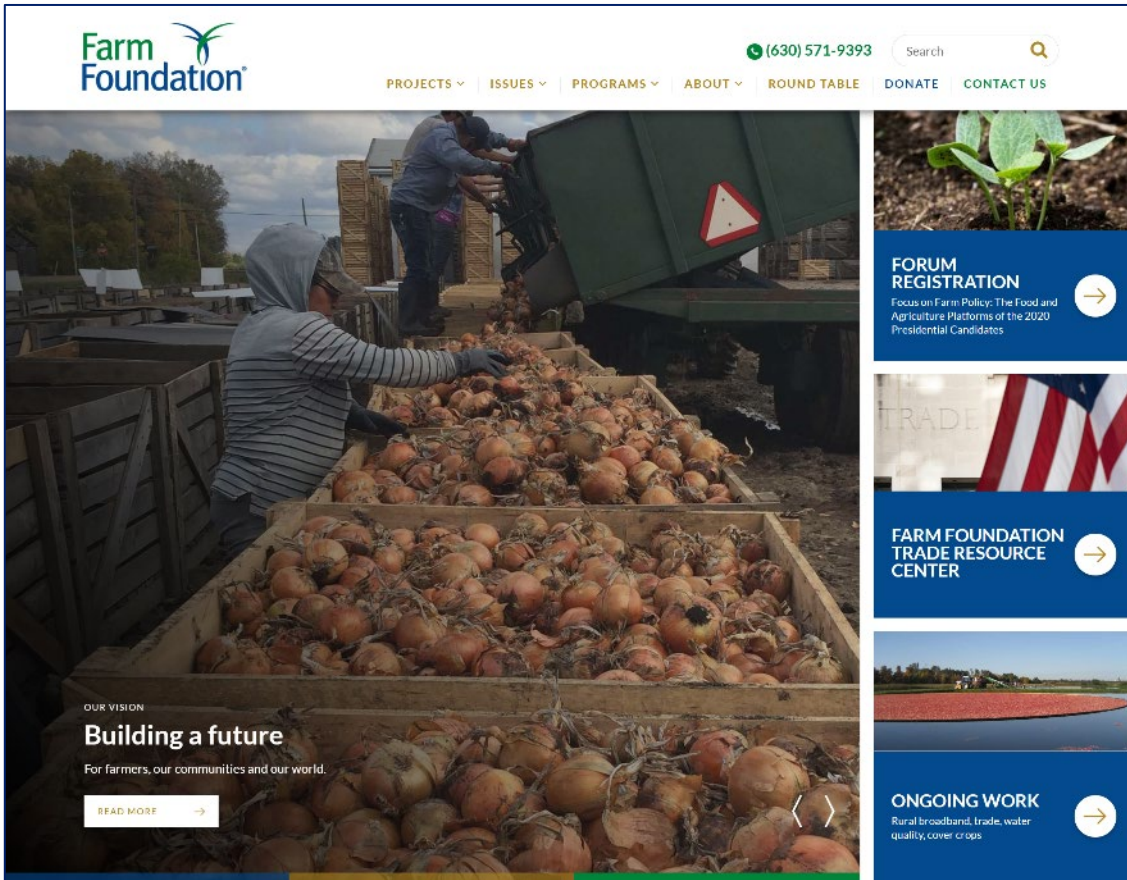
Whatever your
PRIORITY

Farm Foundation offers a place to direct your
ENERGY

Into real, practical
WORK

That will make an
IMPACT

CONNECT WITH US!



farmfoundation.org



@farmfoundation



@thefarmfoundation



Farm Foundation



@thefarmfoundation





THANK YOU

SHARI@FARMFOUNDATION.ORG,

PRESIDENT AND CEO