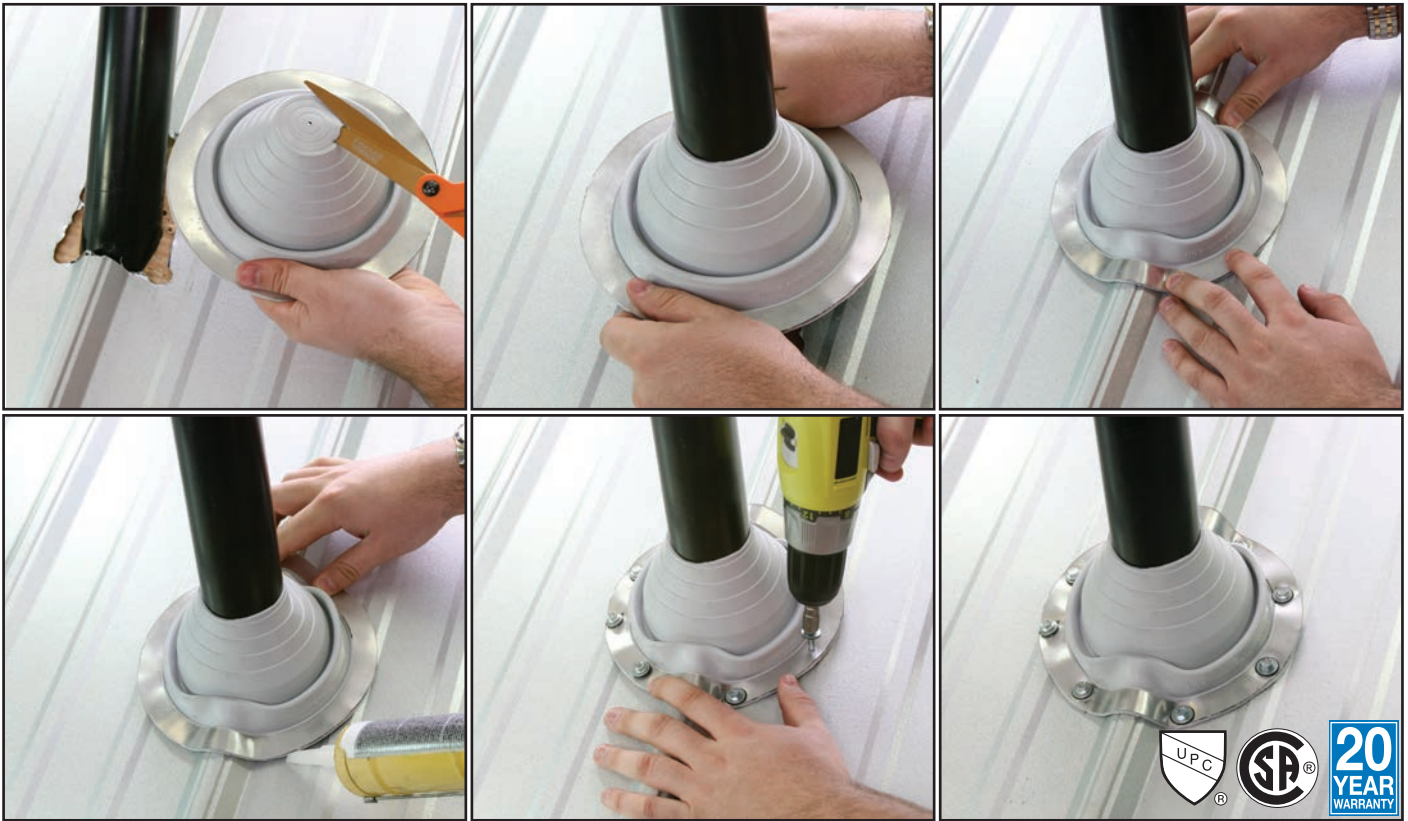


DYNA-FLASH®



DYNA-FLASH® PIPE FLASHING FOR METAL ROOFS

Size	Outside Pipe Dia.	Base O.D. Dia.	Overall Height	Price For Grey or Black 10+ Any Mix
Mini	0" - 1 3/8"	4"	1 1/2"	
#1	1 1/4" - 2 1/2"	4 3/4"	3"	
#2	1 3/4" - 3"	6 1/4"	4"	
#3	1 1/4" - 5"	7 3/4"	4"	
#4	3" - 6 1/4"	9 1/4"	5"	
#5	4 1/4" - 7 3/4"	10 1/2"	5"	
#6	5" - 9"	13"	6"	
#7	6" - 11"	14 1/2"	6"	
#8	7" - 13"	16 1/2"	6"	
#9	9" - 19"	25 1/4"	8"	
#10	12" - 28 1/2"	34" Square base	7 1/2"	

DYNA-FLASH® pipe flashings are made of EPDM and Red / Grey Silicone, and are designed for maximum resistance to all weather conditions. Pipe diameters can be seen clearly for proper fitting. The base is designed to mold to most panel configurations and roof pitches regardless of pipe location.

Available in 12 colors:

Brown • Black • Dark Grey • Light Grey • White
Dark Green • Light Green • Dark Blue
Light Blue • Bright Red • Terra Cotta • Copper
Also Available in Red & Grey High Temp Silicone



Almost every flashing qualifies under the Buy American Act. Ask for details.

ADVANCED OZONE RESISTANCE tested to...		EPDM 70 hour @ 500 pphm	RED GREY SILICONE 70 hour @ 500 pphm
HIGH TEMPERATURE RESISTANCE Tested to		+135°C (+275°F) +100°C (+212°F)	+260°C (+500°F) +225°C (+437°F)
LOW TEMPERATURE RESISTANCE tested to...		- 55°C (-67°F)	- 74°C (-101°F)
COMPRESSION SET Maximum...		25%	50%

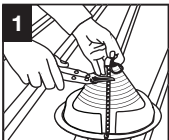
DYNA-FLASH®



DYNA-FLASH® pipe flashings are now available
in the most requested color. . **INVISIBLE**

All 12 colors are in stock for all 11 sizes (mini-#10). Grey & Black Dyna-Flash® are priced on pg 62. Add 40% to those prices when ordering blue, brown, green, red or white. The copper & silicone adder is even greater but varies by size.

RETROFIT (WRAP-AROUND) DYNA-FLASH®



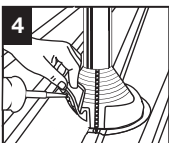
Using tin snips, cut the cone to fit pipe, starting opposite the mechanical locking joiner.



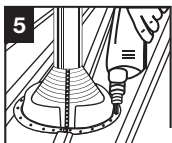
Wrap Retrofit around pipe, join the interlocking teeth starting from the top and proceeding down.



Squeeze joiner tightly with pliers to crimp, start at the top and work down to the base.



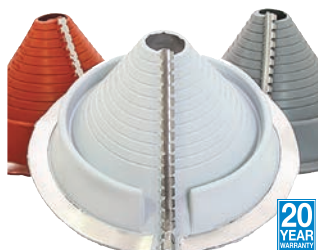
Apply sealant to the underside of the base. Shape Retrofit to roof by pressing the aluminum base to the contours of the roof.



Fasten Retrofit to roof using self-drilling screws, leave no gaps between base and the roof contours.

Retrofit Available in: 4
Sizes • Pipe Range: ¾" to 20" • EPDM Grey rubber • High Temperature Red or Grey Silicone

Outside Diameter of Pipe to be Flashed	Retrofit DYNA-FLASH Base Diameter	Retrofit DYNA-FLASH Height	Retrofit EPDM P/N	Temp Rating
3/4" - 2 3/4"	6 3/10"	3 1/2"	801	Constant Temp at Roofline -58°F to +239°F and 302°F intermittently
2" - 7 1/4"	10 3/4"	5 3/5"	802	
3 1/4" - 10"	14 1/2"	5 4/5"	803	
9 1/2" - 20 1/2"	25 1/4" (SQUARE BASE)	5 1/2"	804	



High Temperature DYNA-FLASH®

Available in: 10 Sizes • Pipe Range: 0" to 19"

Made of High Temperature Grey or Red Silicone. These slip over silicone flashings are compounded specifically for maximum resistance to weathering due to ozone and ultraviolet light.



20
YEAR
WARRANTY

ADVANCED OZONE RESISTANCE tested to...	RED / GREY SILICONE 70 hour @ 500 pphm
HIGH TEMPERATURE RESISTANCE Tested to	Intermittent Continuous
LOW TEMPERATURE RESISTANCE tested to...	COMPRESSION SET Maximum...

Retrofit (wrap around) Grey EPDM are priced to the left. Retrofit silicone are stocked in the same four dimensions as listed to the left. We removed the pricing on the silicone retrofit Dyna-Flash because too many customers told us that they thought we only carried "wrap-around" silicone and not the "pull over" silicone Dyna-Flash. Call for pricing. Silicone is available in Red or Battleship Grey.

Retrofit silicone Dyna-Flash, as rated at roofline – 58°F to 392°F and 482°F intermittently.