

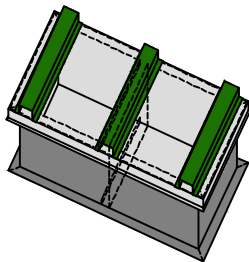
CCP- PLC  
Platform Curb

**Standard Features:**

- 18ga. G90 min. seam welded perimeter construction.
- 18ga. min. vertical cross supports tack welded in, within 24" on center of curb length.
- 18ga. G90 min. cap factory screwed on all around, max. 3" from corners & 8" nominal on center.
- 16ga. G-90 min. Hat channels strip welded onto the caps (2" high x 4" wide nominal).
- 8" min. curb height.
- 1"x4" wood nailer factory installed under the top capping lip..
- Continuous welded seams coated with corrosion inhibiting compound.
- 2" base mounting flanges all 4 sides.

\*For smaller units with punched pans, the hat channels are factory positioned under the unit knock-out anchoring holes for field drilling & anchoring. (sizes approx. unit -1", LxW)

\*For larger unit with base rails, Qty-2, 2"x2" 16ga. G90 angles provided loose for field fastening vertically into the hat channels & horizontally into the unit base rail. (sizes approx. L-2" x W+5")  
All mounting/anchoring hardware is BY OTHERS.



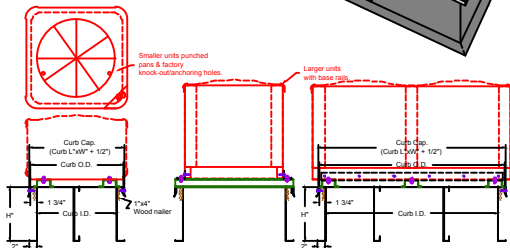
### Optional Features:

1. Heavy gauge galvanized steel.
2. Aluminum construction.
3. Stainless Steel, 304-2B construction.
4. 2" 1.5 acoustical liner (R8 insulation) factory installed to the interior perimeter.
5. Pressure Treated wood nailer.
6. Extended base flanges (specify size).

NOTE:

Custom submittal drawings provided for approval prior to ordering, per unit/curb application. Unit factory submittals or hand sketch with bolt pattern must be supplied before submittals can be produced.

Custom designed for condensing units or horizontal unit applications.



### Specification & Dimensions

[illegible]