

**- THE NONPROFIT SECTOR -**  
A RESOURCE GUIDE FOR  
CLARK AND FLOYD COUNTIES



**Community Foundation**  
of Southern Indiana  
*Partner. Resource. Steward.*

Research Provided by the Applied Research and Education Center  
Indiana University Southeast 4201 Grant Line Rd. New Albany, IN 47150

## Table of Contents

Table of Figures .....	2
<b>Local Philanthropy and the Nonprofit Sector .....</b>	<b>3</b>
<i>The Sample</i> .....	3
<i>Needs, Gaps, and Overlaps</i> .....	4
<i>Funding Needs</i> .....	5
<i>Funding Gaps</i> .....	7
<i>Service Gaps</i> .....	9
<i>Overlaps in Funding</i> .....	15
<i>Overlaps in Services</i> .....	17
<i>Conclusions</i> .....	18
<b>Appendices .....</b>	<b>20</b>
<b>Appendix A: Interest Area Index .....</b>	<b>21</b>
<i>Animal Related</i> .....	22
<i>Arts, Culture &amp; Humanities</i> .....	22
<i>Community Improvement, Capacity Building</i> .....	24
<i>Crime, Legal Related &amp; Public Safety</i> .....	27
<i>Education &amp; Other Instruction</i> .....	28
<i>Environmental Quality, Protection &amp; Beautification</i> .....	33
<i>Food, Agriculture &amp; Nutrition</i> .....	33
<i>Government</i> .....	35
<i>Health &amp; Medical Discipline</i> .....	36
<i>Housing, Shelter</i> .....	39
<i>Human Services &amp; Public, Society Benefit—Multipurpose &amp; Other</i> .....	40
<i>Mental Health, Crisis intervention</i> .....	44
<i>Philanthropy, Voluntarism &amp; Grantmaking Foundations</i> .....	45
<i>Recreation, Sports, Leisure</i> .....	47
<i>Religion Related, Spiritual Development</i> .....	49
<i>Youth Development</i> .....	52
<i>Unknown, Other</i> .....	54
<b>Appendix B: Alphabetical Index of Kentuckiana Nonprofits .....</b>	<b>55</b>

## Table of Figures

Figure 1: Budget sizes of nonprofits included in the sample	4
Figure 2: Organizational needs that nonprofits have the most difficulty funding	5
Figure 3: Service gaps identified by nonprofit organization leaders	10
Figure 4: Percent of Nonprofit Executives and Business and Community Leaders who "Agree" or "Strongly Agree" with statements related to healthy living (Pearson chi-square $p < .05$ )	11
Figure 5: Percent of Nonprofit Executives and Business and Community Leaders who "Agree" or "Strongly Agree" with the statement: Our community does a good job taking care of the mentally ill (Pearson chi-square $p < .05$ )	11
Figure 6: Percent of Nonprofit Executives and Business and Community Leaders who "Agree" or "Strongly Agree" with statements related to housing (Pearson chi-square $p < .05$ )	13
Figure 7: Percent who "Agree" or "Strongly Agree" with the statement: "Our community does a good job taking care of the homeless." —distinct Nonprofit Executive perspective (Pearson chi-square $p < .05$ )	13
Figure 8: Percent who "Agree" or "Strongly Agree" with the statement: "People in our community are financially secure." —distinct Nonprofit Executive perspective (Pearson chi-square $p < .05$ )	15
Figure 9: Number of nonprofit organizations addressing interest area as a percent of all area nonprofits in the index	21



# Local Philanthropy and the Nonprofit Sector

The nonprofit sector plays an instrumental role in responding to community needs not met by the market or the public sector. A combination of state and federal grants and contracts, individual and corporate donations, and grants and gifts from philanthropic organizations supports the sector. Nonprofit organizations' ability to engage in the work they do to meet community needs is dependent on philanthropy.

The 2015 Assessment of Needs and Priorities in Clark and Floyd Counties included a survey of area nonprofit community service providers. The nonprofit research instrument included the core survey completed by all respondents, as well as questions on funding challenges, and on gaps and overlaps in both funding and services in Southern Indiana.

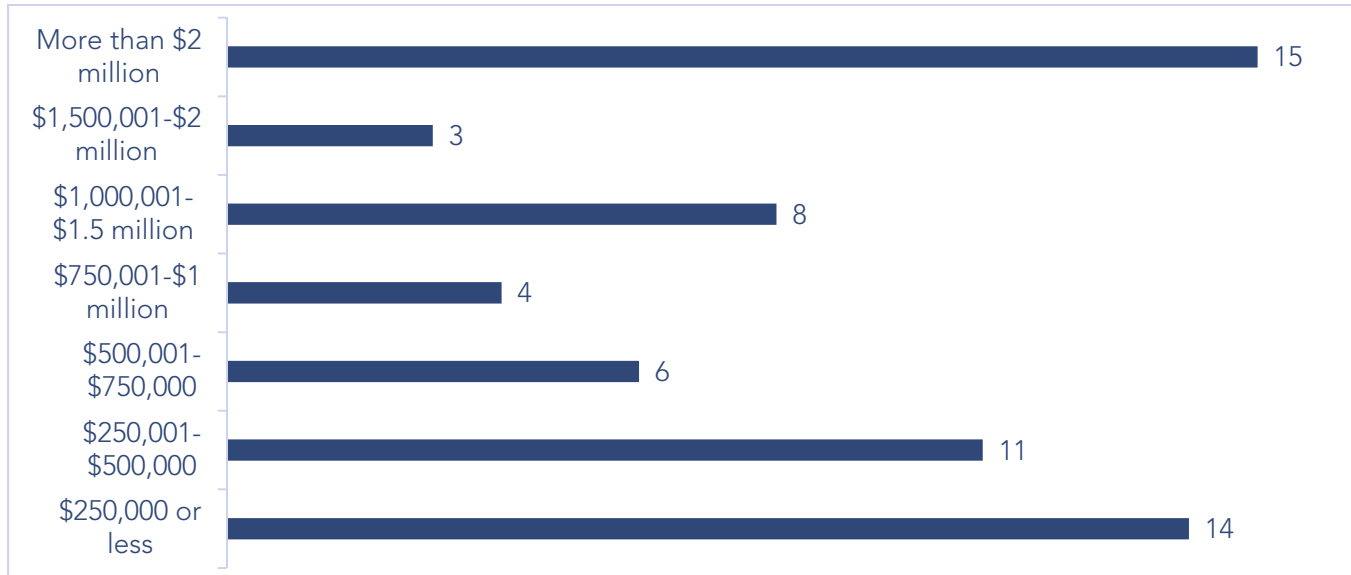
This report presents findings from the nonprofit survey with attention to areas where nonprofit executives reflect distinct perspectives from other business and community leaders or from residents, and findings specific to the challenges of the nonprofit sector. Nonprofit executives' responses tend to reflect a stronger sense of community needs in areas important to low-income and vulnerable populations than do business and community leaders, and in some cases, residents. Findings from the nonprofit survey suggest area agencies struggle to fund personnel, maintain facilities, cover non-staff overhead, and they have a hard time sustaining programs after grant periods expire. The top two gaps in area services are in healthcare and homeless and housing needs, followed by basic assistance (including childcare and transportation) and services for special populations.

Survey results suggest the need for local philanthropies to think strategically about where to direct resources and about how they structure their funding relationships with nonprofit organizations to ensure that while new and innovative strategies are encouraged, strong and effective programs also receive consistent funding to promote continued impact.

## The Sample

The Applied Research and Education Center (AREC) received electronic or paper surveys from 68 organizations that ranged in size from "no dedicated staff" to one with more than 1,000 employees. The mean staff size was 43.2 and the median was eight, reflecting the prevalence of small nonprofit organizations in this area. Of the 63 organizations that responded to the question, 50 organizations (79.4%) have applied for at least one grant from the Community Foundation of Southern Indiana and all but two of those organizations have received a grant from the Community Foundation.

**FIGURE 1: BUDGET SIZES OF NONPROFITS INCLUDED IN THE SAMPLE**



Among responding organizations, budget sizes vary significantly with the mean and median both falling in the \$500,001-\$750,000 range (Figure 1). Organizations represent diverse sectors (though there was no representation of nonprofit financial services). Respondents could identify with more than one sector as many organizations work on multiple issues. The largest number of nonprofit community service respondents work in “Education,” followed by “Health, Mental Health and Substance Abuse,” and “Youth Development.”

## Needs, Gaps, and Overlaps

The 2015 Assessment of Community Needs and Priorities—Nonprofit Survey asks nonprofit executives a variety of questions about both organizational and community needs, gaps in funding and services, and overlaps in available funding and services for Clark and Floyd counties. Nonprofit executives have a distinct perspective from that of other business and community leaders and residents because their organizations are on the front lines of identifying and responding to area needs. Because the resident and business and community leader surveys skew toward people with higher levels of education and income, the nonprofit executives’ responses are an important representation of the needs of lower income or otherwise vulnerable populations in the community. Social location in terms of education and income shapes experiences and networks in ways that insulate demographic groups from one another and may make it difficult for those who do not depend on local nonprofit services to realize the full need in their own communities. Findings from the nonprofit survey suggest that, indeed, nonprofit executives have a distinct perspective on needs, gaps, and overlaps.

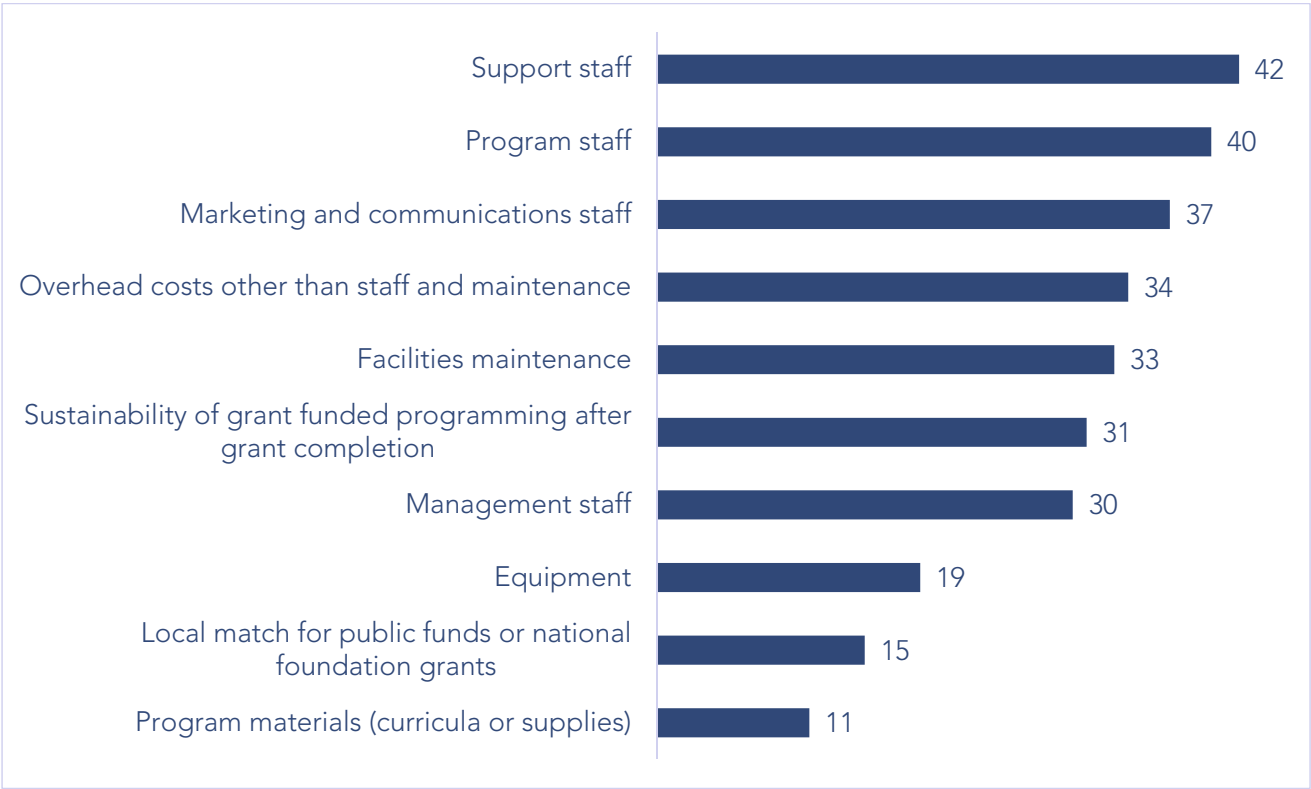
Nonprofit leaders express a desire for more coordination and collaboration of Southern Indiana programs and services. Some suggest they would like to see funds made available to support the work required to make such efforts a success. Many indicate significant gaps in social services, particularly those for the homeless and some special populations (such as the elderly, the LGBTQ community, non-English speakers, victims of domestic violence, and inmates). In addition,

healthcare and mental and behavioral healthcare services, including substance abuse treatment, were identified as service gaps for the region.

**Funding Needs**

The Nonprofit Survey includes a list of organizational needs and instructs respondents to indicate which three their own organization has the greatest difficulty funding with available grants and funding sources (i.e. revenue, donations, or government grants). The item provides local philanthropies with a sense of organizational functions that may or may not be funded by other sources. Nonprofit leaders identify funding for various types of staff—program, support, and communications—as their top three areas of need, followed closely by overhead other than staff, facilities maintenance, sustainability of grant-funded programming after grants end, and management staff (Figure 2). Local matches and program materials are least frequently selected as areas that are difficult to fund.

**FIGURE 2: ORGANIZATIONAL NEEDS THAT NONPROFITS HAVE THE MOST DIFFICULTY FUNDING**



Nonprofit organizations in Clark and Floyd counties report difficulty accessing year-to-year operational funding. Most indicate they receive smaller one-time grants to cover equipment costs, programming, or to fill gaps, but they struggle with ongoing support and the kinds of funding that can free more time for direct service. One respondent explains that such small one-time grants are not really “supporting” the program, but rather enhancing other funding or filling holes. A strong portion of respondents indicate that funding for various types of staff positions is both the hardest to find and their organization’s greatest need, demonstrating that funding for staff is a gap among the area’s nonprofits.

Additional comments from nonprofit leaders include further attention to staff, basic operating costs, facilities upkeep and capital needs, sustaining programs after grant completion, marketing, and funds for meeting client needs, such as utility assistance or the cost of program participation. Others address how grant constraints, requirements, and changing missions of foundations make finding support difficult in general. Changes in funders' missions can leave organizations without funding upon which they may have relied for years.

Frequently, grants allow for only a small portion of the award to cover operating costs. Many comments illustrate key challenges:

*Most grant makers I'm familiar with will not fund operating expenses, including staff compensation. This makes it difficult to grow. We require our paid staff to raise their own support (the IRS calls this "deputized fund-raising"). An advance 1-2-year commitment from a grant maker to fully-fund a staff position would buy us enough time to raise the funds from other sources, and allow us to put the new staff member to work immediately.*

*Two areas most difficult for our agency are operational and administrative costs. Most grants will only allow a very small percentage of indirect cost and yet we need someone to answer the phone, and someone to lead the organization to enable Program Directors to run the grants.*

*Overhead is something that is rarely if ever funded. We don't even find it is an option. Marketing staff would also fall in this category.*

*Nonprofits have limited funds for building maintenance, so this becomes a problem area - especially when you have to forego asking for program support in order to get needed building repairs. ... There are almost no funders that will support overhead costs that I am aware of. And marketing and communications...our budgets most often cannot sustain marketing expenses.*

*Often a grant does not cover the cost of equipment, nor does it allow funds to be spent on salaries to hire someone to oversee the project. It would be very helpful to be able to give a person a stipend for their services, if a salary is not allowed. This also pertains to hav[ing] the equipment or facilities maintained.*

Several nonprofit leaders explain that additional funding for operating costs would allow them to hire better, more qualified staff:

*Finding funds to operate is the hardest job of the two nonprofit groups I currently work for and the one nonprofit group I serve as a board member. Funds to hire the right staff not just the cheapest staff available is a huge problem for local nonprofits. I think many local donors still think nonprofits should be all volunteer. They think groups like the Rotary and Lions Club are the same as groups here locally that are providing services and/or tangible benefits to the local citizens through the work of the nonprofit. I think a campaign to explain just how many nonprofits could be more successful if they could pay staff would be worth it.*

*Salary is always the hardest money to raise, but the good work can't happen without paid, knowledgeable staff.*

*Working with abused, neglected, and troubled children, I find program staff to be the most important resource, and the one for which there is little funding.*

When all sources of funding are considered (including revenue, donations, public funding, and national and local philanthropies), local nonprofit organizations have a difficult time funding staff (program, support, and communications/marketing) and facilities maintenance. Local grant makers cannot assume that organizations will meet these needs with other funding sources. In many cases, organizations simply delay maintenance and then seek emergency funding to address a facilities issue when it reaches a crisis point, and they stretch and overwork staff, often weakening performance and programs, generating high turnover rates and program instability.

### **Funding Gaps**

To better understand the local philanthropy and nonprofit sector landscape, the Nonprofit Survey asks organizations to identify gaps in the funding available from local grant making agencies. The combination of the question of what organizations have trouble funding and where they see gaps in local philanthropy provide a sense of the role area philanthropies do and do not play in the overall support of local nonprofits. Findings suggest that gaps in funding are not simply the result of unsuccessful attempts, but result from the absence of opportunity to have such expenses covered by any of the sources upon which local nonprofits rely. Local foundations may see their funding serving particular types of needs and may assume that program revenues, government funding, or grants from national organizations cover other types of expenses. Responses to these questions clarify the needs of the nonprofit sector and the extent to which those needs are the same whether considering the whole picture of revenue sources or just local foundations.

Once again, respondents indicate gaps in funding for basic operating costs and staffing. Comments also point to funding gaps in social services and in funding that is more inclusive of smaller organizations or other special areas, such as business, science and technology, and non-public schools. Many respondents describe the funding gap for basic operating, overhead, and capital costs:

*We need access to more foundation support, there are so few in this region that will provide dollars in Indiana, probably [nine] that I can think of and the demand is so much larger than the dollar. Administrative dollars are totally out of synch with reality especially for the smaller agencies. No foundation concentrates on building administrative capacity and I see that as a real need.*

*Operating funding and local matching dollars for federal grants.*

*Grants often do not cover real cost of implementing programs, the overhead often is absorbed by other funding which has the potential to adversely affect other programs.*

Nonprofit leaders describe the lack of support to grow their organizations:

*I think there is a gap in funding capacity building initiatives. For nonprofit agencies, growth presents a distinctive challenge in that they must invest in organizational infrastructure and staffing to expand programs and their own fundraising, but grants typically address the programmatic growth that comes later in that process. This is further fueled by the "overhead" myth that nonprofits are more effective if they don't spend anything on staff,*

*operations, facilities, supplies, etc. This perpetuates the misguided donor view that they only see measurable results from program funding.*

Some feel there is little support for creative or collaborative endeavors. Collaboration and coordination are commonly discussed as desirable, but too few funders provide resources for collaborative efforts.

*Collaborative work: even though everyone says they want to fund it, they don't fund it well because they have a hard time recognizing the intangibles of the work itself. This is very labor intensive work that requires a lot of persistence, trust, and tact.*

Regarding funding gaps in social services, the most frequently mentioned service areas include housing and shelter, mental illness, and early childhood education and childcare. Other service areas mentioned include: general human needs, healthcare, domestic violence, families with low-incomes or living in poverty, substance abuse, and services that target special populations, such as the elderly, non-English speakers, the LGBTQ community, the disabled, and veterans.

Several respondents explain how preventative care is less likely to receive funding than reactive care:

*Funding for preventative mental healthcare services. It seems that all of us want to react when something occurs rather than get to the root before we have a situation. A good example of how preventative funding has made a tremendous difference is in the area of breast cancer. I'd like to see more effort placed on the preventative side rather than placing band aids on the issues after they occur.*

*Gaps in quality of life initiatives and in tackling the root causes of poverty.*

*...these problems are adding up much faster than aid can be administered.*

Nonprofit leaders also indicate a problem with larger nonprofits receiving most of the funding and the promotion of their programs by foundations. Promotion by foundations solidifies the organization's position in the community, but may mean that smaller nonprofits who may be doing good work remain little known and underfunded. One respondent describes:

*In many cases the more affluent nonprofits get richer whereas some of the capable smaller groups cannot/do not compete. Funding for some unique, smaller nonprofits with a move to self-sustaining activities is a gap to be filled.*

Another respondent expresses a need for a more critical approach to the focus on "evidence-based" programs:

*In the rush to adopt "evidence-based" practices, I'm not persuaded that enough weight is given to "faith-based" approaches to addressing human needs. Human beings are unique individuals. The "one-size-fits-all" evidence-based approach may look good on paper, but doesn't always work very well in the trenches. There are certain intangibles in dealing with people that cannot be reduced to a formula on paper. Only faith, experience, and intuition can address some issues adequately enough to produce positive change and good outcomes. Grant makers sometimes need to consider these intangibles, and take the same risk that the*

*organization requesting the grant is willing to take; to try something that may be risky, but shows some promise of delivering results.*

Some comments describe the need for long-term funding and funding for process work like that required in collaborative efforts.

*Most people will provide specialty grants but ongoing support for agencies is rare.*

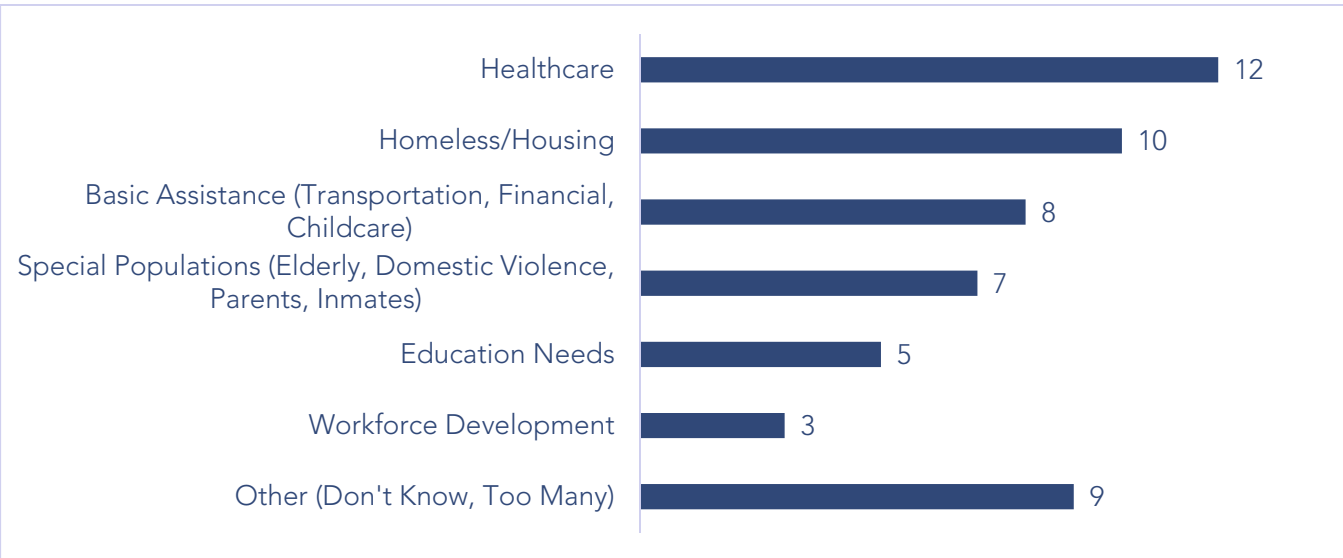
*Should be open to funding organizations that don't necessarily provide "hard services."  
Should be willing to fund coalitions, collaborative and planning organizations where the product is really more of a "process."*

### **Service Gaps**

In addition to exploring the funding landscape, the Nonprofit Survey asks nonprofit executives where they see gaps in the services available to residents of Clark and Floyd counties. Nonprofit executives have a distinct perspective on the nonprofit community service sector. They operate as part of a referral network where the clients of each organization are often dependent on the services of several other organizations. Those working in the nonprofit sector are far more aware of which services are and are not available in the community or which areas need greater capacity to meet the region's needs. This awareness may explain some of the distinctions between nonprofit executives, business and community leaders, and residents on the core assessment questions.

Nonprofit executives identify healthcare (including mental health and substance abuse prevention and treatment) and housing and homelessness as the top two areas of unmet need, followed by a cluster of other basic needs (Figure 3). Gaps in other services including education, workforce development, and services targeted to specific populations such as the elderly, parents, victims of domestic violence, and inmates, are also noted by nonprofit leaders. These service gaps are consistent with findings across multiple respondent groups from the core survey regarding community needs and priorities.

**FIGURE 3: SERVICE GAPS IDENTIFIED BY NONPROFIT ORGANIZATION LEADERS**



Comments identifying service gaps in healthcare point to all areas of wellness, including physical, mental, and behavioral health. One respondent states, “Health services are strongly needed—the one clinic we have is overloaded and needs help. We have never had the level of services needed in this community to really deal with the issues.”<sup>1</sup> Respondents particularly emphasize the lack of mental health services in the area:

- Mental Health programs are severely deficient in both Clark and Floyd counties.*
- We need more support for our homeless population and for mental wellness programs. Many of the homeless are suffering from mental health issues.*
- Psychiatric services, especially for children, are very difficult to locate.*

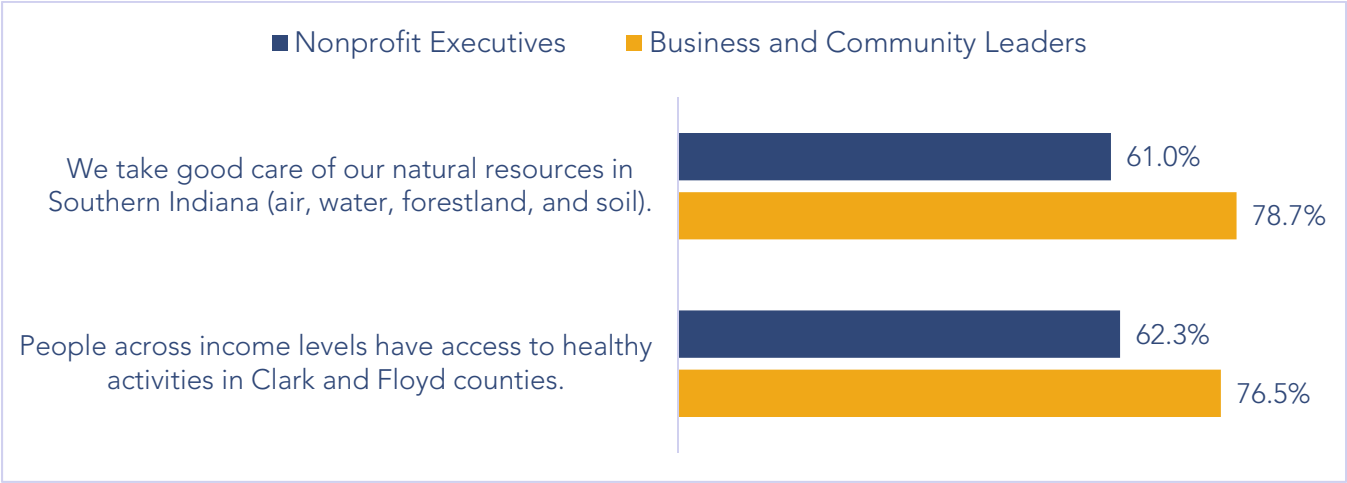
In addition, nonprofit executive responses to the core survey items suggest these leaders have a distinct view of strengths and needs related to healthy living and behavioral health. The majority of all respondent groups agree with the following statements:

- *“We take good care of our natural resources in Southern Indiana (air, water, forestland, and soil).”*
- *“People across income levels have access to healthy activities in Clark and Floyd counties.”*

However, compared to business and community leaders, nonprofit executives are significantly less likely to agree (Figure 4). Over three-quarters of business and community leaders agree that the community takes care of its natural resources and that Clark and Floyd county residents across all income levels have access to healthy activities, whereas closer to 60 percent of nonprofit executives agree with the statements.

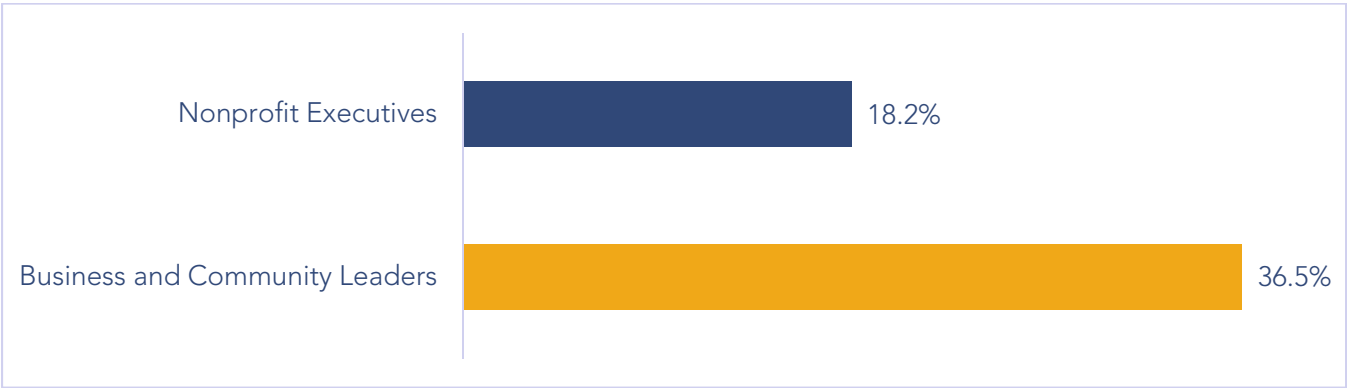
<sup>1</sup> Note: Since the time of this survey, a second organization opened a Federally Qualified Health Center serving homeless, poor, and low-income people

**FIGURE 4: PERCENT OF NONPROFIT EXECUTIVES AND BUSINESS AND COMMUNITY LEADERS WHO "AGREE" OR "STRONGLY AGREE" WITH STATEMENTS RELATED TO HEALTHY LIVING (PEARSON CHI-SQUARE P < .05)**



All respondent groups express fairly low rates of agreement with the statement, “Our community does a good job taking care of the mentally ill,” indicating that a majority recognize the gap in services available to this vulnerable population (Figure 5). However, nonprofit executives agree at a rate that is significantly lower than the rate for business and community leaders which again demonstrates the difference in perceptions of how wide the gap in these services is within the community.

**FIGURE 5: PERCENT OF NONPROFIT EXECUTIVES AND BUSINESS AND COMMUNITY LEADERS WHO "AGREE" OR "STRONGLY AGREE" WITH THE STATEMENT: OUR COMMUNITY DOES A GOOD JOB TAKING CARE OF THE MENTALLY ILL (PEARSON CHI-SQUARE P < .05)**



Several more nonprofit respondents address the gaps and challenges in serving people with substance abuse disorders. Substance abuse treatment is identified as a community priority in the core needs assessment survey by residents and local business and community leaders as well. Nonprofit leaders express:

*Drug and alcohol treatment programs. Long term treatment, not just detoxification and it needs to be residential. It is a huge need. There have been so many drug related deaths in this community and the jail is full. Something has to give. Treatment and re-entry programs are strongly needed, lots of people in jail but very little opportunity to mainstream them back into being a productive citizen.*

*Speaking from my area of interest we do not have enough inpatient beds for addiction if a person does not have insurance or Medicaid. [Existing programs are] not sufficient. And there is no medical detox available with or without insurance. ([See interactive maps](#))*

Other respondents acknowledge issues surrounding health insurance as a barrier to many people, especially homeless and low-income individuals or families, in accessing what limited healthcare services the area provides. One respondent describes the challenges of receiving child psychiatric services, “It is very difficult to get medication for the young clients we see because very few psychiatric providers take Medicaid.”

Nonprofit leaders describe gaps in emergency shelter, services for the homeless, and affordable housing. One respondent states, “A glaring gap to me is service to the homeless population—affordable housing both temporary and long term.” Another respondent also addresses gaps in temporary housing service:

*Despite the overlaps in some areas of housing programs, there are significant gaps in temporary shelter and transitional housing.*

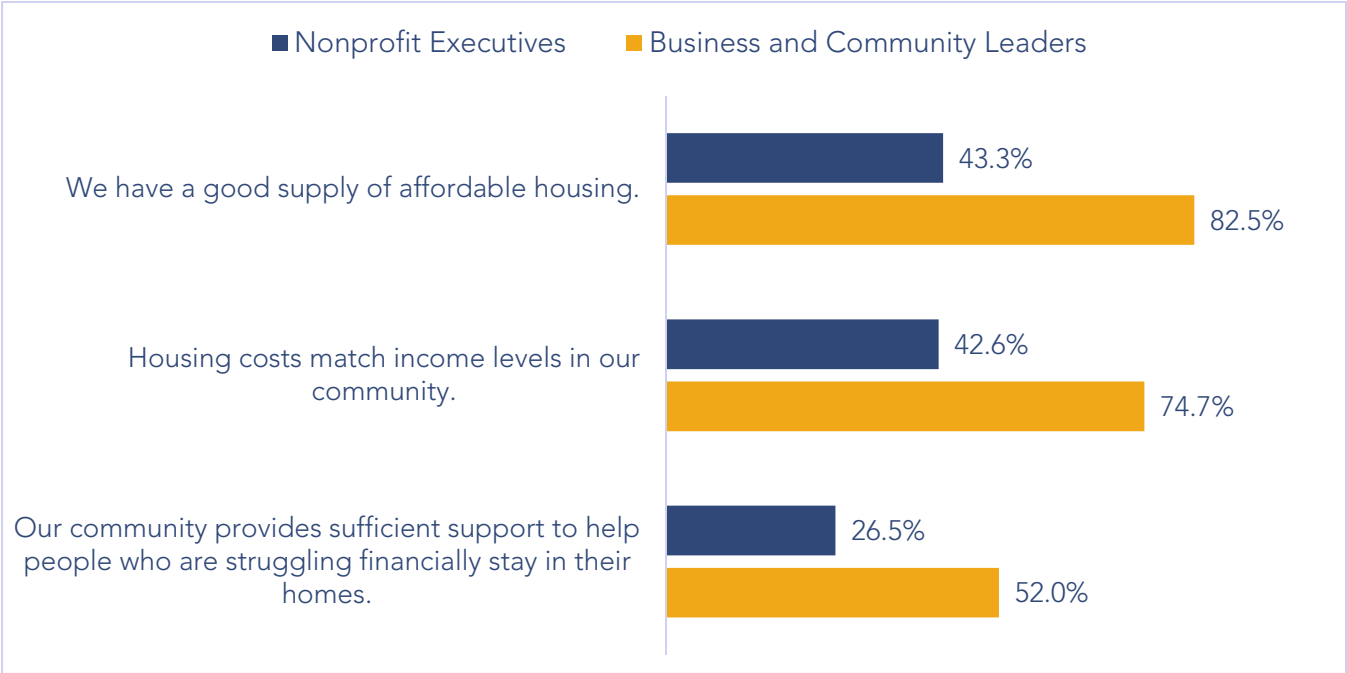
A number of respondents acknowledge these gaps in Floyd County specifically, but also note the challenges facing Clark County:

*Floyd County does not have services for the homeless. Clark County has not made it easy for [local homeless service providers] to continue to function.*

*I don't know about Clark County but it seems that one gap in Floyd is the need for services to the homeless population.*

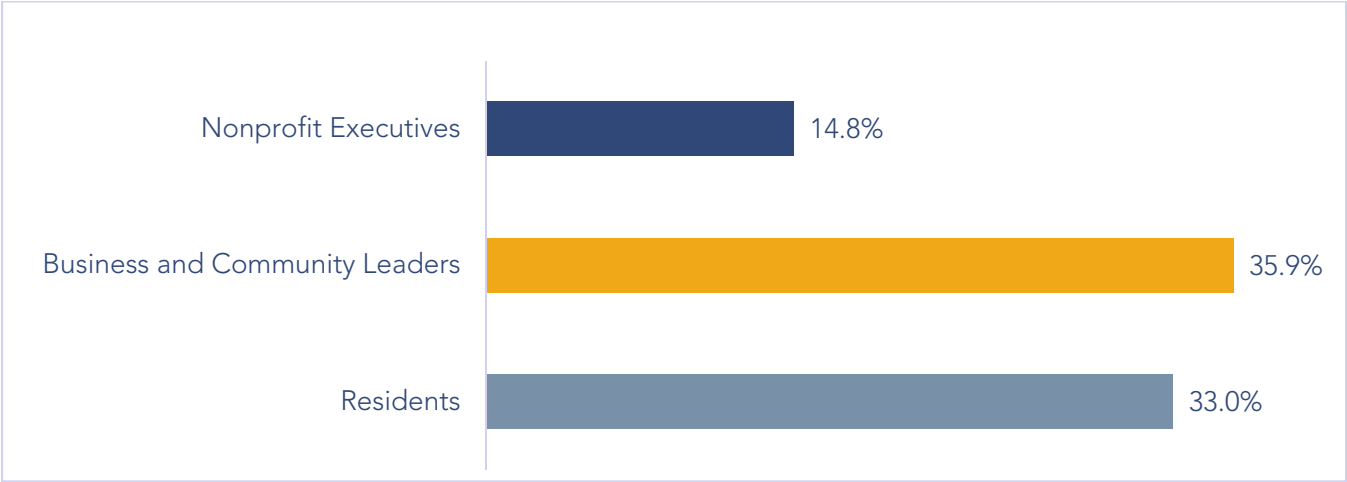
Nonprofit executives have a significantly different perspective than business and community leaders when it comes to affordable housing (Figure 6). Less than half of nonprofit executives agree with the core survey statement, “We have a good supply of affordable housing,” compared to 82.5 percent of business and community leaders. Similarly, less than half of nonprofit executives, but nearly three-quarters of business and community leaders agree that “Housing costs match income levels in our community.” Only about a quarter of nonprofit executives think our community does enough to help people who are struggling financially stay in their homes, compared to just over half of business and community leaders (Figure 6).

**FIGURE 6: PERCENT OF NONPROFIT EXECUTIVES AND BUSINESS AND COMMUNITY LEADERS WHO "AGREE" OR "STRONGLY AGREE" WITH STATEMENTS RELATED TO HOUSING (PEARSON CHI-SQUARE  $P < .05$ )**



While a majority of all groups' responses on the core survey indicate that the community struggles to take good care of the homeless, nonprofit executives vary from both residents and business and community leaders in their rate of agreement (Figure 7). Over 30 percent of both residents (33.0%) and business and community leaders (35.9%) agree, but only 14.8 percent of nonprofit executives agree that the local community takes good care of the homeless.

**FIGURE 7: PERCENT WHO "AGREE" OR "STRONGLY AGREE" WITH THE STATEMENT: "OUR COMMUNITY DOES A GOOD JOB TAKING CARE OF THE HOMELESS." —DISTINCT NONPROFIT EXECUTIVE PERSPECTIVE (PEARSON CHI-SQUARE  $P < .05$ )**



Many nonprofit leaders address gaps in transportation, financial assistance, childcare, education, and in services specifically targeted to reach vulnerable populations. Transportation is also identified by all respondent groups on the core survey as a community priority ([see interactive maps that show transportation routes](#)). One nonprofit leader describes, “There are numerous gaps in public transportation availability throughout Clark and Floyd counties. Where there is service, it is often not frequent enough to meet needs adequately.” Other comments describing these service gaps include:

*I think the worst of these is childcare. Finding affordable childcare on minimum wage is absolutely impossible and the waiting list for the state subsidized programming is usually at 18 months.*

*There are not enough services available to inmates and newly-released offenders to help them make a successful and permanent transition from addiction/incarceration to free society. We are missing a huge opportunity here. In our experience working with this population, a \$2,500 investment in re-entry has the potential to save the taxpayers at least \$100,000 over the ten years after an inmate's release. That's a 4,000% return on investment, and just one individual.*

*I also see gaps in services for the elderly (housing, health, food), which are likely to worsen as the population ages. There are also few options for service for victims of domestic violence and few agencies that address crisis pregnancy.*

*School readiness/High School age career support & readiness services.*

*Clark County is more cognizant of the need for special needs education than Floyd. Free to low cost tutoring for elementary through high school. Drop-out prevention.*

*Domestic violence and sexual violence supportive services, affordable housing, transportation access.*

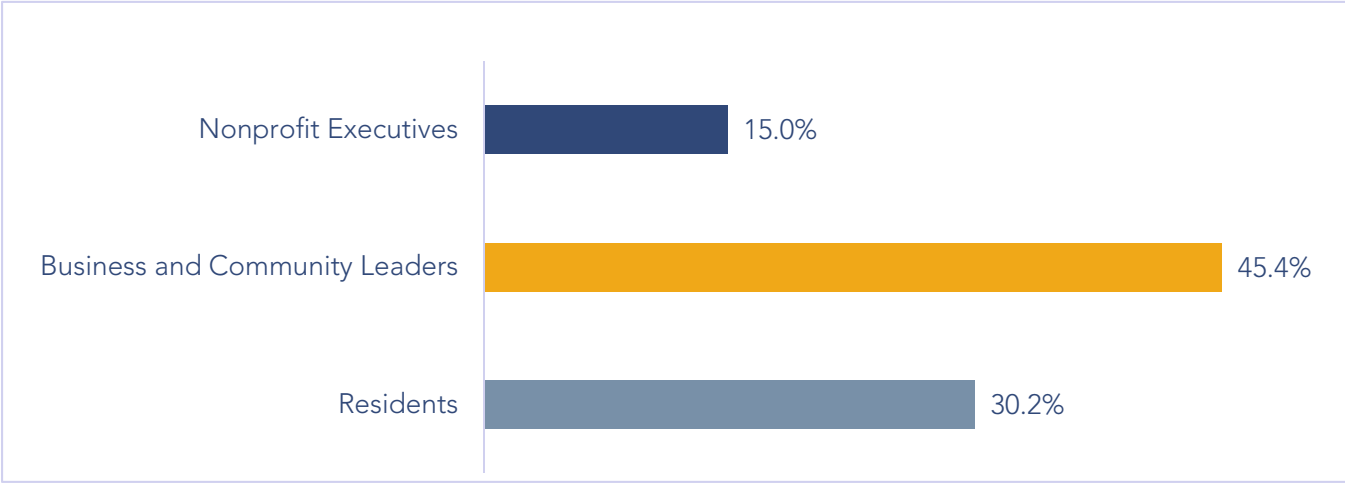
*Additionally, we need more education programs to help some of our populations break the cycles that are generational.*

One respondent identifies the lack of a collaborative effort in making services more easily available:

*Collaborative/Collective Impact tracking mechanism (software used by many so we can see what services a person is receiving or is eligible for more easily).*

In addition, nonprofit leaders differ significantly from business and community leaders and residents in their views of the community's financial security as indicated by their responses to the core survey (Figure 8). While a majority of all respondents recognize that people in the community have financial difficulties, 45.4 percent of business and community leaders and 30.2 percent of residents actually agree that community members are financially secure, compared to only 15.0 percent of nonprofit executives.

**FIGURE 8: PERCENT WHO "AGREE" OR "STRONGLY AGREE" WITH THE STATEMENT: "PEOPLE IN OUR COMMUNITY ARE FINANCIALLY SECURE." —DISTINCT NONPROFIT EXECUTIVE PERSPECTIVE (PEARSON CHI-SQUARE  $P < .05$ )**



Nonprofit executives identify significant gaps in services to meet the basic needs of residents. Their comments suggest that the failure to meet basic needs for housing, healthcare, childcare, and transportation to support access to services and employment perpetuates cycles of financial instability.

### **Overlaps in Funding**

Local funders would like to eliminate redundancies in and maximize the impact of local philanthropic grant making. With this goal in mind, the assessment asks nonprofit community service providers to consider places where available funding overlaps. The idea is to note areas from which funding might be redirected to address the identified gaps.

The largest number of respondents indicate that they do not see overlaps in funding. In part, their comments suggest that because local grants are often small, without grants from multiple agencies (even if for the same thing), nonprofits would not be able to provide their services:

*I do not see overlap; all nonprofits weave together a patchwork of funding to meet essential needs.*

*I don't see very much overlap at all. Some agencies need to apply to and receive funding from multiple sources to fund a particular program.*

As long as funders are mostly providing relatively small grants, nonprofits need overlap in what they fund to piece together the full amount for a program or purchase. Another respondent perceives distinct roles for each of the local funding agencies:

*I really don't see a lot of overlap. I believe the Ogle Foundation concentrates on leadership, bricks and mortar, and some areas of education while the Horseshoe Foundation gives a variety of grants— the grants are not promised for long periods of time and are support*

*grants which a budget can only be enhanced by; the Community Foundation gives education and nonprofit grants but the amounts again are of a nature that enhances a program but doesn't really support it; the United Way gives grants to member organizations only and those dollars have experienced some trimming in the last few years; the Bales Foundation will do sizeable grants but can't provide continual funding.*

Another group of respondents draws on the identified needs and gaps to note that funding for programs is readily available from many foundations, whereas overhead, capacity building, and staff are left unfunded. The comments focus on programmatic grants, the one-time nature of many funding sources, and the demands for constant change and new programming rather than helping to support staff and operations for ongoing effective programs.

*It is common to see grant making agencies and foundations fund programmatic activities, but there is a shortage of available funds to support general organizational growth and capacity building. Unless an organization is continually expanding or adding programs, they are limited in the ability to come up with a fresh project proposal for each grant cycle.*

*It seems grant makers are only interested in one-time project funding, which makes sustainability a big challenge, and makes it as though agencies must reinvent themselves every grant cycle.*

*Again, many of the foundations are interested in maximum impact upon a community, so the foundations typically fund program-based expenses. Finding support for our programming is easier, and we receive support for our programming from several foundations and grant-making agencies.*

One respondent identifies a few areas of service where funding may have reached saturation:

*Many funders overlap in the area of children's services, funds for program materials, and services for those who need in-home support.*

Several other comments echo the program materials overlap, but no other organization mentions children's services or in-home support. Five respondents discuss overlap in education funding, particularly noting funds for technology and educational materials, scholarships, and higher education institutions.

Overall, the discussion of overlaps in funding mirrors the discussion of what nonprofits are not able to fund. Finding program dollars is easy, but other expenses are difficult to cover. Nonprofit executives criticize the model of offering short-term funding for innovative programming. Nonprofit organizations indicate they feel pressed to constantly reinvent themselves to chase dollars rather than having consistent support to implement strategies that work with qualified staff and well-maintained facilities.

## Overlaps in Services

Nonprofit leaders describe little overlap in services. The largest share of respondents indicates no overlap and one nonprofit leader questions scrutiny of potential overlap as noted in their response:

*I don't really. It amuses me that for profits can have a myriad of restaurants, stores, banks, etc. but nonprofits are expected to not "duplicate services". Choice is healthy here as well. I don't see enough development in nonprofits for choice for those who consume the services. Limited choice means limited service. I really believe nonprofit development is sorely lacking. We need more than one drug/alcohol agency that provides direct service affordably; we need more outreach/support for the poor and there is none that I consider competent at this time. For years I have heard about overlaps and duplication of services when in reality people are hurting and need more.*

Another respondent explains that outsiders may perceive overlap in places where agencies are actually collaborating:

*I would venture to say that some might perceive overlap when none exists. The public may not be aware of behind-the-scenes collaboration that takes place to ensure needs are met.*

Some respondents identify basic needs as areas of overlap. However, these respondents acknowledge collaborative efforts as a means to eliminate duplication and competition and to improve services and fill gaps.

*Clark County needs to concentrate medical and mental issues in one organization to eliminate competing agencies asking for the same funds from the same pot. Agencies should be encouraged to partner and collect those funds as one unit, but not duplicate services.*

*Much has been discussed about overlaps in housing services in particular. I think we're making some strides in eliminating or mitigating some of those overlaps. I think there is also some overlap in feeding programs (soup kitchens, food pantries, etc.), but there are also gaps in these very areas. ([See maps of food pantries and soup kitchens with hours](#))*

*There are lots of duplicated services. Instead of streamlining services, we continue to work alone to provide for OUR Community. Money is limited and the need is even greater for some services, such as housing, emergency assistance, food pantry, etc.*

*There has been a decreasing emphasis on requiring organizations to demonstrate their ability to collaborate with other not-for-profits. This no longer is the case, but would eliminate some of the overlap issues.*

*There are many agencies who provide the same services and the right hand does not know what the left hand is doing. It would be very helpful to have a directory of what agencies are doing.*

Three different respondents identify overlap in Christmas programs—both angel tree and other gift programs for children and programs for seniors. One respondent more directly questions the religious community's role in some of this duplication:

*I definitely feel like there are significant overlaps of religious organizations serving the communities. I think faith based organizations are doing many of the exact same things. I don't know for sure if they are serving the same people...I appreciate the work that faith based organizations are doing, but I get frustrated that they are not all working together to provide for the community rather than competing against one another for the same donations for the same programming.*

One respondent sees multiple small school districts and municipalities as a case of overlap. The same respondent believes that funding scholarships rather than supporting the institutions providing the education constitutes overlap in funding.

The findings suggest that collaboration and coordination efforts may eliminate some process duplication, but that the greater problem in the community service system is unmet need. Nonprofit executives do not present a picture that suggests, if not for duplication of effort, the region's service sector could address its gaps. Instead they indicate that the community needs more resources made available to make the services more effective in maintaining or regaining stability in peoples' lives.

## Conclusions

The nonprofit sector is diverse. Sixty-eight nonprofit organizations that provide services and programming to the community responded to the 2015 Assessment of Needs and Priorities survey. The sample organizations vary in size, but identify some consistent concerns. Area nonprofits need funding to support various types of staff positions, capacity building, and overhead costs. Nonprofit leaders express concern that funding structures require them to constantly develop new programming instead of providing consistent effective services that respond to local needs.

Identified gaps in funding and in services tend to overlap in the areas of housing and shelter, mental healthcare, education (particularly early childhood education and care), basic assistance, and healthcare. Comments indicate that behavioral and physical healthcare need to include far greater resources devoted to substance abuse prevention and treatment. Respondents also note transportation as a barrier to stability for low-income families and a factor that limits access to needed services.

Area nonprofits generally piece together funding from diverse local, state, and national sources. Funding overlaps are not a pressing issue because they need to be able to get similar types of funding from multiple sources in order to cover program and operational costs. Nonprofit executives differ in their perspectives on overlaps in services. Some believe that competition in the nonprofit sector is vital to maintaining quality, choice, and efficiency, while others see redundancies as inefficient. Some respondents note duplication in faith-based charitable efforts including foodbanks and holiday programs and giving.

Further discussion of these issues with nonprofit leaders suggests that coordination may be a greater concern than duplication. In these instances, duplication is bad when an organization is internalizing a step that may not be at the core of their mission and that they could delegate to

another provider. Some indicate that this problem is a different concern than having two organizations that provide a particular service as their core missions. In many instances area need outstrips the sector's ability to respond and additional providers and innovation in the field are welcome.

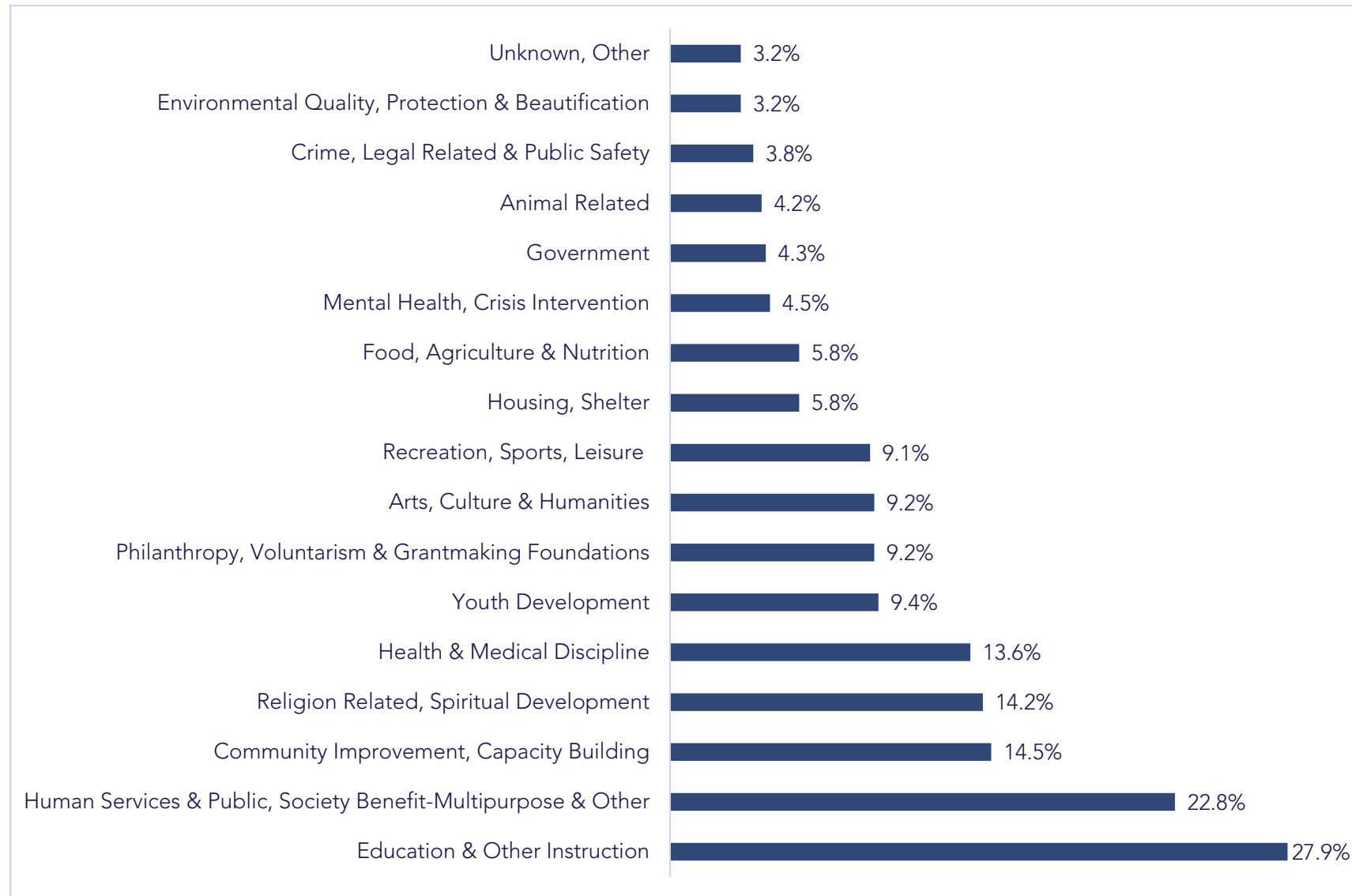
In addition to the specific needs of the sector, nonprofit executives provide an important perspective on the needs of those most dependent on community services. The distinctions between nonprofit executive and business and community leader responses are important. Local elected officials and business leaders make a lot of decisions about how to direct public money and efforts as well as where to invest local philanthropic dollars. People who occupy these positions, however, may not be fully aware of the level of unmet need in the community. Business and community leaders' responses may at times accurately suggest, for example, that only 25 percent of the population struggles with an issue, but that does not mean that available resources are meeting the community's needs. Nonprofit executives provide needed perspective on funding and service gaps. To the extent that local philanthropies seek to play an instrumental role in supporting the nonprofit sector in meeting community needs and enhancing quality of life, this input is invaluable to strategic grant making efforts.

# Appendices

The list of nonprofit organizations serving Clark and Floyd counties in the Interest Area and Alphabetical Indexes comes from Internal Revenue Service (IRS) Form 990 data for tax year 2014 and 2015 (Data extract 02/2016 by the National Center for Charitable Statistics), and information provided by local philanthropic foundations. Many organizations provide incomplete information on the sector in which they operate and the activities they engage. To overcome this, researchers used several variables on sector and activity to identify appropriate placement of organizations into interest areas that reflect the work they do. Still, some organizations seemed misplaced or their listing did not reflect all provided services. Researchers utilized web resources and local knowledge of the nonprofit sector to enhance the Form 990 data and place organizations into interest areas that more fully reflect their work. Because contributors to this process do not have full knowledge of all organizations, some organizations' activities may be more completely represented than others. Additionally, the researchers recognize that because of incomplete data sources, some organizations may not appear in the indexes.

# Appendix A: Interest Area Index

FIGURE 9: NUMBER OF NONPROFIT ORGANIZATIONS ADDRESSING INTEREST AREA AS A PERCENT OF ALL AREA NONPROFITS IN THE INDEX



## ***Animal Related***

Animal Related (n=22)
Animals Protection Association Inc.
Cats Meow Rescue Inc.
Chances Spot (see also Mental Health, Crisis Intervention)
Dogs Helping Heroes Inc.
Equine Rescue League of Southern Indiana Inc.
Fat Heads Rescue Inc.
Floyd County Animal Rescue League
Floyd County Humane Society Inc. of New Albany, Indiana (see also Education & Other Instruction)
Humane Association of Clark County Inc. (see also Education & Other Instruction)
Kentuckiana Animal Rescue Organization Inc.
Kentucky Humane Society
Louisville Weimaraner Rescue Inc.
Louisville Zoo Foundation (see also Community Improvement, Capacity Building; Environmental Quality, Protection & Beautification)
Louisville Zoological Gardens (see also Environmental Quality, Protection & Beautification)
Mark Sullivan Animal Care Foundation Inc.
New Albany-Floyd County Animal Control and Shelter
Piece of My Heart Rescue Inc.
Purrfect Friends for Adoption Inc.
Raptor Rehabilitation (see also Environmental Quality, Protection & Beautification)
Shamrock Pet Foundation, Inc.
Southern Indiana Animal Rescue Inc.
Wildlife In Need Inc. (see also Environmental Quality, Protection & Beautification)

## ***Arts, Culture & Humanities***

Arts, Culture & Humanities (n=49)
Actors Theatre of Louisville
Arts Council of Southern Indiana
Arts Sanctuary

Bethlehem Township Heritage Preservation Association Inc.
Cardinal Ritter Birthplace Foundation Inc.
Carnegie Center for Art & History Inc.
Clark County Museum
Clarksville Little Theatre Company Inc.
Falls of the Ohio Foundation Inc. (see also Environmental Quality, Protection & Beautification)
FC Star Boosters Inc. (see also Education & Other Instruction)
FC Star Singers Inc. (see also Education & Other Instruction)
Floyd Action Network
Floyd Central High School Theater
Floyd County Historical Society Inc.
Friends of Division Street School Inc.
Friends of Fairview (see also Community Improvement, Capacity Building)
Friends of the Culbertson Mansion Inc. (see also Philanthropy, Voluntarism & Grantmaking Foundations)
Friends of Town Clock Church
Fund for the Arts
George Rogers Clark Land Trust Inc. (see also Environmental Quality, Protection & Beautification)
Howard Steamboat Museum
Idea Festival
Indiana Landmarks
Indiana Lewis and Clark Foundation Inc.
Indiana's Historic Pathways Inc.
Institute for the Study of Religious and Anomalous Experience (see also Religion Related, Spiritual Development)
Jeffersonville Carnegie Library Foundation Inc. (see also Education & Other Instruction; Philanthropy, Voluntarism & Grantmaking Foundations)
Kentucky Museum of Art & Craft
Ladies Union Club Inc.
Louisville Scottish Rite
Louisville Theatric Association
Louisville Visual Art Association
Mary Anderson Center
Nadus Films
National Society Colonial Dames XVII Century (see also Education & Other Instruction)

National Society of the Daughters of the American Revolution (see also Education & Other Instruction)
National Society United States Daughters of 1812
Navilleton Schoolhouse Inc.
New Albany Bicentennial Commission Inc.
Ohio Valley Creative Energy Inc. (see also Environmental Quality, Protection & Beautification; Community Improvement, Capacity Building)
Paul W. Ogle Cultural & Community Center
Portland Museum
Silver Hills Historical Society
Southern Indiana Quilt Guild
Stage One Family Theater
The Filson Historical Society
The Frazier Historical Museum
The What If? Theatre Company
Vintage Fire Museum, Inc.

### ***Community Improvement, Capacity Building***

<b>Community Improvement, Capacity Building (n=77)</b>
21st Century Parks (see also Environmental Quality, Protection & Beautification)
Alzheimer's Association (see also Health & Medical Discipline)
Blue River Services Inc. (see also Human Services & Public, Society Benefit-Multipurpose & Other)
Blue Sky Foundation Inc. (see also Philanthropy, Voluntarism & Grantmaking Foundations)
Borden Community Helping Hands Inc.
Borden Parks Department (see also Government; Recreation, Sports, Leisure)
Borden-Wood Township Volunteer Fire Department Inc. (see also Crime, Legal Related & Public Safety; Government)
Charlestown Volunteer Fire Department Inc. (see also Crime, Legal Related & Public Safety; Government)
Cherry Hill Neighborhood Association Inc.
Christian Formation Ministries Inc. (see also Human Services & Public, Society Benefit-Multipurpose & Other; Religion Related, Spiritual Development)
City of Clarksville (see also Government)
City of Jeffersonville (see also Government)
City of New Albany (see also Government)

Clark County Emergency Management Agency (see also Crime, Legal Related & Public Safety; Government)
Clark County Ministerial Coalition (see also Religion Related, Spiritual Development)
Clark County Superior (see also Government)
Clarksville Sister Cities Association (see also Unknown, Other)
Community Action of Southern Indiana Inc. (see also Human Services & Public, Society Benefit-Multipurpose & Other)
Community Coordinated Child Care Inc. (see also Education & Other Instruction; Health & Medical Discipline)
Community Foundation of Southern Indiana Inc. (see also Human Services & Public, Society Benefit-Multipurpose & Other; Philanthropy, Voluntarism & Grantmaking Foundations)
Compassionate Legal Services of Louisville and Southern Indiana (see also Crime, Legal Related & Public Safety)
Develop New Albany Inc.
East Spring Street Neighborhood Association Inc.
Edwardsville Community Inc.
Falls Cities Sertoma Club (see also Unknown, Other)
Family Scholar House Inc. (see also Education & Other Instruction; Housing, Shelter; Human Services & Public, Society Benefit-Multipurpose & Other)
Floyd County Emergency Management Agency (see also Crime, Legal Related & Public Safety; Government)
Floyds Knobs Community Club Inc. (see also Recreation, Sports, Leisure)
Friends of Fairview (see also Arts, Culture & Humanities)
Goodwill of Southern Indiana Inc. (see also Education & Other Instruction; Human Services & Public, Society Benefit-Multipurpose & Other; Mental Health, Crisis Intervention)
Greater Community Council Inc.
Henryville Community Association Inc.
Home of the Innocents (see also Human Services & Public, Society Benefit-Multipurpose & Other; Mental Health, Crisis Intervention; Youth Development)
Horseshoe Foundation of Floyd County Inc.(see also Human Services & Public, Society Benefit-Multipurpose & Other; Philanthropy, Voluntarism & Grantmaking Foundations)
Indiana Legal Services (see also Crime, Legal Related & Public Safety)
Indiana Youth Institute (see also Human Services & Public, Society Benefit-Multipurpose & Other; Philanthropy, Voluntarism & Grantmaking Foundations)
Jeffersonville Main Street Inc.
Jeffersonville Urban Enterprise Association Inc.
Keep New Albany Clean and Green (see also Environmental Quality, Protection & Beautification)
Kentucky Derby Festival Foundation
Kentucky Indiana Exchange-Regional Leadership Coalition (see also Human Services & Public, Society Benefit-Multipurpose &

Other)
Leadership Southern Indiana Inc. (see also Education & Other Instruction)
Louisville Downtown Development Corporation
Louisville Waterfront Development Corporation
Louisville Zoo Foundation (see also Animal Related; Environmental Quality, Protection & Beautification)
Metro United Way Inc. (see also Human Services & Public, Society Benefit-Multipurpose & Other; Education & Other Instruction)
Monroe Township Volunteer Fire Department (see also Crime, Legal Related & Public Safety; Government)
Network Center for Community Change Inc.
New Albany Redevelopment
New Albany Urban Enterprise Zone
New Albany-Floyd County Parks Department (see also Government; Recreation, Sports, Leisure)
New Directions Housing Corporations (see also Housing)
Nucleus Kentucky's Life Sciences & Innovation
Ohio River Greenway Inc. (see also Environmental Quality, Protection & Beautification)
Ohio Valley Creative Energy Inc. (see also Arts, Culture & Humanities; Environmental Quality, Protection & Beautification)
OSI Foundation Inc.
Paul Ogle Foundation Inc. (see also Philanthropy, Voluntarism & Grantmaking Foundations; Religion Related, Spiritual Development)
Pilot Club of New Albany
Reclaiming Our Culture Kentuckiana (R.O.C.K.)
Region 10 Workforce Board Inc. (see also Human Services & Public, Society Benefit-Multipurpose & Other)
Rotary Foundation of New Albany Inc. (see also Human Services & Public, Society Benefit-Multipurpose & Other)
Sellersburg Volunteer Fire Department Inc. (see also Crime, Legal Related & Public Safety; Government)
South Louisville Community Center
Southern Indiana Minority Enterprise Initiative Inc.
Southern Indiana Pro Bono Referrals Inc. (see also Crime, Legal Related & Public Safety)
Strategic Indiana Providers Network (see also Human Services & Public, Society Benefit-Multipurpose & Other)
The Hazel & Walter T. Bales Foundation Inc. (see also Philanthropy, Voluntarism & Grantmaking Foundations)
The Housing Partnership Inc. (see also Housing)
Town of Borden (see also Government)
Town of Charlestown (see also Government)
Town of Georgetown (see also Government)
Town of Greenville (see also Government)

Town of Sellersburg (see also Government)
Town of Utica (see also Government)
Tri-County Health Coalition of Southern Indiana Inc. (see also Health & Medical Discipline; Human Services & Public, Society Benefit-Multipurpose & Other)
Women's Foundation of Southern Indiana (see also Human Services & Public, Society Benefit-Multipurpose & Other)
XLerateHealth (see also Education & Other Instruction; Health & Medical Discipline)

## ***Crime, Legal Related & Public Safety***

<b>Crime, Legal Related &amp; Public Safety (n=20)</b>
American Inns of Court Foundation
Borden-Wood Township Volunteer Fire Department Inc. (see also Community Improvement, Capacity Building; Government)
Charlestown Volunteer Fire Department Inc. (see also Community Improvement, Capacity Building; Government)
Children and Family Advocates of Clark County Indiana Inc. (see also Human Services & Public, Society Benefit-Multipurpose and Other)
Clark County Emergency Management Agency (see also Community Improvement, Capacity Building; Government)
Clark County Superior (see also Community Improvement, Capacity Building; Government)
Clark County Superior Court II Drug Court Inc. (see also Government; Human Services & Public, Society Benefit-Multipurpose & Other)
Clark-Floyd County Child Abuse Prevention Council Inc. (see also Youth Development)
Compassionate Legal Services of Louisville and Southern Indiana (see also Community Improvement, Capacity Building)
Floyd County Community Corrections
Floyd County Emergency Management Agency (see also Community Improvement, Capacity Building; Government)
Floyd County Token Club Inc. (see also Health & Medical Discipline; Mental Health, Crisis Intervention)
Hispanic Connection of Southern Indiana Inc. (see also Education & Other Instruction; Human Services & Public, Society Benefit-Multipurpose & Other; Religion Related, Spiritual Development)
Indiana Legal Services (see also Community Improvement, Capacity Building)
Mercy's Edge Ministries (see also Religion Related, Spiritual Development)
Monroe Township Volunteer Fire Department (see also Community Improvement, Capacity Building; Government)
Open Door Youth Services (see also Education & Other Instruction; Mental Health, Crisis Intervention; Youth Development)
Sellersburg Volunteer Fire Department Inc. (see also Community Improvement, Capacity Building; Government)
SOAR Ministries Inc. (see also Education & Other Instruction; Religion Related, Spiritual Development)
Southern Indiana Pro Bono Referrals Inc. (see also Community Improvement, Capacity Building)

## ***Education & Other Instruction*** *(see maps of Educational Attainment levels)*

### **Education & Other Instruction (n=148)**

21st Century Scholars
4-H Club Corporation- Clark County (see also Food, Agriculture & Nutrition; Recreation, Sports, Leisure; Youth Development)
4-H Club Corporation- Floyd County (see also Food, Agriculture & Nutrition; Recreation, Sports, Leisure; Youth Development)
Borden Business & Finance Academics Inc.
Borden Dollars for Scholars
Borden Elementary School
Borden Junior/Senior High School
Borden K-12 Schools PTO
Bridgepoint Elementary School
Cancer Research & Education Fund Inc. (see also Health & Medical Discipline)
Charles L. Shedd Kentucky Association
Charlestown Foundation for Excellence Inc. (see also Philanthropy, Voluntarism & Grantmaking Foundations)
Charlestown High School
Charlestown Middle School
Children's Academy Early Learning Center
Choices Life Resource Center Inc. (see also Health & Medical Discipline; Human Services & Public, Society Benefit-Multipurpose & Other)
Christian Academy of Southern Indiana (see also Religion Related, Spiritual Development)
Clark County Middle/High School
Clarksville Community School Corporation
Clarksville High School
Clarksville Middle School
Communities in Schools of Clark County Inc.
Community Coordinated Child Care Inc. (see also Community Improvement, Capacity Building; Health & Medical Discipline)
Community Montessori School
Cordelia P. Hedges TUW FBO Carroll College
Corden Poter School
CrossPoint Family Life Ministry Inc. (see also Religion Related, Spiritual Development)
Don Sisloff Fund
Ethan Bennett Memorial Scholarship Fund

Fairmont Elementary School
Faith and Finances Inc. (see also Human Services & Public, Society Benefit-Multipurpose & Other; Religion Related, Spiritual Development)
Falls of the Ohio (see also Environment)
Family Scholar House Inc. (see also Community Improvement, Capacity Building; Housing, Shelter; Human Services & Public, Society Benefit-Multipurpose & Other)
FC Star Boosters Inc. (see also Arts, Culture & Humanities)
FC Star Singers Inc. (see also Arts, Culture & Humanities)
Floyd Central Band Boosters
Floyd Central High School
Floyd County Community Action- Head Start
Floyd County Humane Society Inc. of New Albany, Indiana (see also Animal Related)
Floyds Knobs Elementary PTO
Floyds Knobs Elementary School
Friends of the New Albany-Floyd County Public Library Inc.
GCCS Educational Foundation Inc. (see also Philanthropy, Voluntarism & Grantmaking Foundations)
Georgetown Elementary School
Goodwill of Southern Indiana Inc. (see also Community Improvement, Capacity Building; Human Services & Public, Society Benefit-Multipurpose & Other; Mental Health, Crisis Intervention)
Grace Lutheran School (see also Religion Related, Spiritual Development)
Grant Line Elementary School
Greater Clark County Schools
Greater Louisville Music Teacher Association
Green Valley Elementary School
Greenville Elementary School
Hazelwood Middle School
Hazelwood Middle School PTO Inc.
Henryville Band Boosters
Henryville Elementary School
Henryville Jr./Sr. High School
Highland Hills Middle School
Highland Hills Middle School PTO
Hispanic Connection of Southern Indiana Inc. (see also Crime, Legal Related & Public Safety; Human Services & Public, Society Benefit-Multipurpose & Other; Religion Related, Spiritual Development)

Holy Family Catholic School (see also Religion Related, Spiritual Development)
Hope Southern Indiana Inc. (see also Food, Agriculture & Nutrition; Human Services & Public, Society Benefit-Multipurpose & Other; Religion Related, Spiritual Development)
Humane Association of Clark County Inc. (see also Animal Related)
Indiana Congress of Parents and Teachers Inc.
Indiana Philanthropy Alliance (see also Philanthropy, Voluntarism & Grantmaking Foundations; Youth Development)
Indiana University Alumni Society
Indiana University Foundation; Indiana University Southeast Foundation (see also Philanthropy, Voluntarism & Grantmaking Foundations)
Indiana University Southeast
Ivy Tech Community College
Ivy Tech Foundation (see also Philanthropy, Voluntarism & Grantmaking Foundations)
Jefferson Community & Technical College
Jefferson Community & Technical College Foundation (see also Philanthropy, Voluntarism & Grantmaking Foundations)
Jeffersonville Carnegie Library Foundation Inc. (see also Arts, Culture & Humanities; Philanthropy, Voluntarism & Grantmaking Foundations)
Jeffersonville High School
Jeffersonville High School Instrumental Band Boosters Inc.
Jeffersonville Township Library
Jonathan Jennings Elementary School
Jonathan Jennings Elementary School PTO
Kentucky Indiana Exchange-Regional Leadership Coalition (see also Community Improvement, Capacity Building)
Kentucky Science Center
La Leche League of Southern Indiana (see also Health & Medical Discipline)
Leadership Southern Indiana Inc. (see also Community Improvement, Capacity Building)
Louisville Library Foundation (see also Philanthropy, Voluntarism & Grantmaking Foundations)
Maple Elementary School
Metro United Way Inc. (see also Community Improvement, Capacity Building; Human Services & Public, Society Benefit-Multipurpose & Other)
Mount Tabor Elementary School
National Gerontological Nursing Association Inc. (Louisville Area Chapter) (see also Health & Medical Discipline)
National Society Colonial Dames XVII Century (see also Arts, Culture & Humanities)
National Society of the Daughters of the American Revolution (see also Arts, Culture & Humanities)
New Albany High School

New Albany High School PTO Inc.
New Albany-Floyd County Education Foundation Inc. (see also Philanthropy, Voluntarism & Grantmaking Foundations)
New Albany-Floyd County Schools
New Hope Services Inc. (see also Health & Medical Discipline; Human Services & Public, Society Benefit-Multipurpose & Other)
New Washington Alumni Scholarship Association Inc.
New Washington Band Boosters
New Washington Elementary School
New Washington Middle/High School
Northaven Elementary School
Northaven Elementary School PTO
Open Door Youth Services (see also Crime, Legal Related & Public Safety; Mental Health, Crisis Intervention; Youth Development)
Our Lady of Perpetual Help School (see also Religion Related, Spiritual Development)
Our Lady of Providence Junior/Senior High School (see also Religion Related, Spiritual Development)
Our Place Drug and Alcohol Education Services Inc. (see also Health & Medical Discipline; Human Services & Public, Society Benefit-Multipurpose & Other; Mental Health, Crisis Intervention)
Parkview Middle School
Parkwood Elementary School
Phi Beta Psi Sorority (see also Recreation, Sports, Leisure; Unknown, Other)
Pirate Pride Booster Club
Pleasant Ridge Elementary School
Prosser School of Technology
Psi Chi The International Honor Society in Psychology
Purdue Polytechnic
Purdue Research Foundation (see also Philanthropy, Voluntarism & Grantmaking Foundations)
Rauch Inc. (see also Health & Medical Discipline; Human Services & Public, Society Benefit-Multipurpose & Other)
Renaissance Academy
River Valley Middle School
River Valley Middle School PTO
Riverside Elementary School
Rock Creek Community Academy
S. Ellen Jones Elementary School
Sacred Heart School (see also Religion Related, Spiritual Development)
School for Wee Ones (see also Human Services & Public, Society Benefit-Multipurpose & Other)

Scribner Middle School
Scribner Middle School PTO
Silver Creek Career Academy Programs Inc.
Silver Creek Elementary School
Silver Creek Elementary School PTO
Silver Creek High School
Silver Creek Middle School
Silver Creek Middle School PTO
Silver Creek Primary School
Silver Creek Primary School PTO
Slate Run Elementary School
SOAR Ministries Inc. (see also Crime, Legal Related & Public Safety; Religion Related, Spiritual Development)
Spalding University
Spring Hill Elementary School
St. Anthony of Padua Catholic School (see also Religion Related, Spiritual Development)
St. Elizabeth's Catholic Charities (see also Health & Medical Discipline; Housing, Shelter; Human Services & Public, Society Benefit-Multipurpose & Other; Religion Related, Spiritual Development)
Thomas Jefferson Elementary School
Toastmasters International (see also Recreation, Sports, Leisure)
Trustees of Purdue University (see also Food, Agriculture & Nutrition; Recreation, Sports, Leisure; Youth Development)
University of Louisville
Utica Elementary School
Utica Elementary School PTO
Vision Impaired Preschool Services (see also Health & Medical Discipline)
WE Wilson Elementary School
West Clark Community Schools
West Clark Education Center
XLerateHealth (see also Community Improvement, Capacity Building; Health & Medical Discipline)

## ***Environmental Quality, Protection & Beautification***

Environmental Quality, Protection & Beautification (n=17)
21st Century Parks (see also Community Improvement, Capacity Building)
Falls of the Ohio (see also Education & Other Instruction)
Falls of the Ohio Foundation Inc. (see also Arts, Culture & Humanities)
French Creek Settlement Inc.
Friends of the Ohio River Greenway Inc.
George Rogers Clark Land Trust Inc. (see also Arts, Culture & Humanities)
Keep New Albany Clean and Green (see also Community Improvement, Capacity Building)
Knob and Valley Audubon Society of Southern Indiana
Louisville Zoo Foundation (see also Animal Related; Community Improvement, Capacity Building)
Louisville Zoological Gardens (see also Animal Related)
Ohio River Greenway Inc. (see also Community Improvement, Capacity Building)
Ohio Valley Creative Energy Inc. (see also Arts, Culture & Humanities; Community Improvement, Capacity Building)
Raptor Rehabilitation (see also Animal Related)
Southern Indiana Botanical Society Inc.
Sunnyside Master Gardener Association of Southern Indiana
Trash Force Inc.
Wildlife In Need Inc. (see also Animal Related)

## ***Food, Agriculture & Nutrition*** [\*\(see interactive maps\)\*](#)

Food, Agriculture & Nutrition (n=31)
4-H Club Corporation- Clark County (see also Education & Other Instruction; Recreation, Sports, Leisure; Youth Development)
4-H Club Corporation- Floyd County (see also Education & Other Instruction; Recreation, Sports, Leisure; Youth Development)
Celebration Worship Center (see also Human Services & Public, Society Benefit-Multipurpose & Other; Religion Related, Spiritual Development)
Centenary United Methodist Church (see also Human Services & Public, Society Benefit-Multipurpose & Other; Religion Related, Spiritual Development)
Center for Lay Ministries Inc. (see also Housing, Shelter; Human Services & Public, Society Benefit-Multipurpose & Other; Mental Health, Crisis Intervention)

Charlestown Road Southern Baptist Church (see also Human Services & Public, Society Benefit-Multipurpose & Other; Religion Related, Spiritual Development)
Community Kitchen Inc. (see also Human Services & Public, Society Benefit-Multipurpose & Other; Unknown, Other)
Dare to Care Food Bank (see also Human Services & Public, Society Benefit-Multipurpose & Other)
First Baptist Church-Charlestown (see also Human Services & Public, Society Benefit-Multipurpose & Other; Religion Related, Spiritual Development)
First Presbyterian Church (see also Human Services & Public, Society Benefit-Multipurpose & Other; Religion Related, Spiritual Development)
Graceland Baptist Church (see also Human Services & Public, Society Benefit-Multipurpose & Other; Religion Related, Spiritual Development)
Harvest Chapel Church of the Nazarene (see also Human Services & Public, Society Benefit-Multipurpose & Other; Religion Related, Spiritual Development)
Hope Southern Indiana Inc. (see also Education & Other Instruction; Human Services & Public, Society Benefit-Multipurpose & Other; Religion Related, Spiritual Development)
In Heaven's Eyes Inc. (see also Religion Related, Spiritual Development)
Kans for Kids
Kentucky Harvest (see also Human Services & Public, Society Benefit-Multipurpose & Other)
Northside Christian Church (see also Human Services & Public, Society Benefit-Multipurpose & Other; Religion Related, Spiritual Development)
Oak Park Christian Ministries Inc. (see also Religion Related, Spiritual Development)
Our Lady of Perpetual Help Catholic Church (see also Human Services & Public, Society Benefit-Multipurpose & Other; Religion Related, Spiritual Development)
Pearl Baptist Church (see also Human Services & Public, Society Benefit-Multipurpose & Other; Religion Related, Spiritual Development)
Silver Street United Methodist Church (see also Human Services & Public, Society Benefit-Multipurpose & Other; Religion Related, Spiritual Development)
Sojourn Community Church (see also Human Services & Public, Society Benefit-Multipurpose & Other; Religion Related, Spiritual Development)
Speed Memorial Church (see also Human Services & Public, Society Benefit-Multipurpose & Other; Religion Related, Spiritual Development)
St. Anthony of Padua Catholic Church (see also Human Services & Public, Society Benefit-Multipurpose & Other; Religion Related, Spiritual Development)
St. Luke's United Church (see also Human Services & Public, Society Benefit-Multipurpose & Other; Religion Related, Spiritual Development)
St. Mark's United Church of Christ (see also Human Services & Public, Society Benefit-Multipurpose & Other; Religion Related, Spiritual Development)

St. Mary's Church (see also Human Services & Public, Society Benefit-Multipurpose & Other; Religion Related, Spiritual Development)
St. Paul's Episcopal Church-Jeffersonville (see also Human Services & Public, Society Benefit-Multipurpose & Other; Religion Related, Spiritual Development)
St. Paul's Episcopal Church-New Albany (see also Human Services & Public, Society Benefit-Multipurpose & Other; Religion Related, Spiritual Development)
Trustees of Purdue University (see also Education & Other Instruction; Recreation, Sports, Leisure; Youth Development)
Walnut Ridge Baptist Church (see also Human Services & Public, Society Benefit-Multipurpose & Other; Religion Related, Spiritual Development)

## ***Government***

<b>Government (n=23)</b>
Borden Parks Department (see also Community Improvement, Capacity Building; Recreation, Sports, Leisure)
Borden-Wood Township Volunteer Fire Department Inc. (see also Community Improvement, Capacity Building; Crime, Legal Related & Public Safety)
Census Bureau Welfare & Recreation Association (see also Recreation, Sports, Leisure)
Charlestown Volunteer Fire Department Inc. (see also Community Improvement, Capacity Building; Crime, Legal Related & Public Safety)
City of Clarksville (see also Community Improvement, Capacity Building)
City of Jeffersonville (see also Community Improvement, Capacity Building)
City of New Albany (see also Community Improvement, Capacity Building)
Clark County
Clark County Emergency Management Agency (see also Community Improvement, Capacity Building; Crime, Legal Related & Public Safety)
Clark County Superior (see also Crime, Legal Related & Public Safety; Community Improvement, Capacity Building)
Clark County Superior Court II Drug Court Inc. (see also Crime, Legal Related & Public Safety; Human Services & Public, Society Benefit-Multipurpose & Other)
Floyd County
Floyd County Emergency Management Agency (see also Community Improvement, Capacity Building; Crime, Legal Related & Public Safety)
Floyd County Veterans Service Office
Monroe Township Volunteer Fire Department (see also Community Improvement, Capacity Building; Crime, Legal Related & Public Safety)
New Albany-Floyd County Parks Department (see also Community Improvement, Capacity Building; Recreation, Sports, Leisure)

Sellersburg Volunteer Fire Department Inc. (see also Community Improvement, Capacity Building; Crime, Legal Related & Public Safety)
Town of Borden (see also Community Improvement, Capacity Building)
Town of Charlestown (see also Community Improvement, Capacity Building)
Town of Georgetown (see also see also Community Improvement, Capacity Building)
Town of Greenville (see also Community Improvement, Capacity Building)
Town of Sellersburg (see also Community Improvement, Capacity Building)
Town of Utica (see also Community Improvement, Capacity Building)

## ***Health & Medical Discipline***

<b>Health &amp; Medical Discipline (n=72)</b>
Alzheimer's Association (see also Community Improvement, Capacity Building)
American Cancer Society
American Red Cross (see also Human Services & Public, Society Benefit-Multipurpose & Other)
Baptist Health Floyd
Baptist Health Floyd Auxiliary (see also Philanthropy, Voluntarism & Grantmaking Foundations)
Blind Southpaws Inc.
Brandon's House Counseling Center Inc. (see also Human Services & Public, Society Benefit-Multipurpose & Other; Mental Health, Crisis Intervention)
Camp Quality Kentuckiana
Cancer Research & Education Fund Inc. (see also Education & Other Instruction)
Charlie's Kids Foundation Inc.
Children's Hospital
Children's Hospital Foundation (see also Philanthropy, Voluntarism & Grantmaking Foundations)
Choices Life Resource Center Inc. (see also Education & Other Instruction; Human Services & Public, Society Benefit-Multipurpose & Other)
Clark County Hospital Foundation Inc. (see also Philanthropy, Voluntarism & Grantmaking Foundations)
Clark County Memorial Hospital Auxiliary (see also Philanthropy, Voluntarism & Grantmaking Foundations)
Clark Memorial Hospital
Community Coordinated Child Care Inc. (see also Community Improvement, Capacity Building; Education & Other Instruction)
Council on Developmental Disabilities
Cystic Fibrosis Foundation

Down Syndrome of Louisville Inc. (see also Human Services & Public, Society Benefit-Multipurpose & Other)
Dream Factory Inc. (see also Human Services & Public, Society Benefit-Multipurpose & Other)
Epilepsy Foundation of Kentuckiana
Families for Fathers Inc.
Family Health Centers of Southern Indiana (see also Human Services & Public, Society Benefit-Multipurpose & Other)
Floyd County Maternal and Child Health Clinic
Floyd County Token Club Inc. (see also Crime, Legal Related & Public Safety; Mental Health, Crisis Intervention)
Floyd Memorial Foundation Inc. (see also Philanthropy, Voluntarism & Grantmaking Foundations)
Gilda's Club Louisville
Greater North Clark Healthcare Foundation Inc. (see also Philanthropy, Voluntarism & Grantmaking Foundations)
Guerin Inc. (see also Housing, Shelter; Human Services & Public, Society Benefit-Multipurpose & Other)
Hearing Loss Association of America Inc. (Kentuckiana Chapter)
Heartsprings International Ministries Inc. (see also Religion Related, Spiritual Development; Unknown, Other)
Heuser Hearing Institute
Hoosier Hills AIDS Coalition Inc.
Hosparus Inc. (see also Human Services & Public, Society Benefit-Multipurpose & Other; Mental Health, Crisis Intervention)
House of Ruth Inc. (see also Housing, Shelter; Human Services & Public, Society Benefit-Multipurpose & Other)
Jewish Hospital & St. Mary's Foundation (see also Philanthropy, Voluntarism & Grantmaking Foundations)
John Kenyon Eye Research Foundation Inc.
Kaiser Home Support Services Inc. (see also Human Services & Public, Society Benefit-Multipurpose & Other)
Kentuckiana Fibromyalgia Support Group Inc.
Kids Center for Pediatric Therapies
Kosair Charities (see also Human Services & Public, Society Benefit-Multipurpose & Other)
La Leche League of Southern Indiana (see also Education & Other Instruction)
Leukemia and Lymphoma Society
LifeSpan Resources Inc. (see also Human Services & Public, Society Benefit-Multipurpose & Other)
LifeSpring Centerplace II Inc.
LifeSpring Health Systems Inc. (see also Housing, Shelter; Human Services & Public, Society Benefit-Multipurpose & Other; Mental Health, Crisis Intervention)
Louisville Comprehensive Care Multiple Sclerosis Center
National Gerontological Nursing Association Inc. (Louisville Area Chapter) (see also Education & Other Instruction)
New Hope Services Inc. (see also Education & Other Instruction; Human Services & Public, Society Benefit-Multipurpose & Other)
Norton's Healthcare Foundation (see also Philanthropy, Voluntarism & Grantmaking Foundations)

Ohio Valley Blind Association Inc. (see also Human Services & Public, Society Benefit-Multipurpose & Other)
Opening Gates Inc. (see also Mental Health, Crisis Intervention; Recreation, Sports, Leisure)
Our Place Drug and Alcohol Education Services Inc. (see also Education & Other Instruction; Human Services & Public, Society Benefit-Multipurpose & Other; Mental Health, Crisis Intervention)
Paralyzed Veterans of America (see also Human Services & Public, Society Benefit-Multipurpose & Other)
Parkinson Support Center of Kentuckiana (see also Human Services & Public, Society Benefit-Multipurpose & Other)
Partners In Breast Cancer Survival Inc.
Personal Counseling Services Inc. (see also Human Services & Public Society Benefit-Multipurpose & Other; Mental Health, Crisis Intervention)
Providence- Diversicare Healthcare Services
Providence Self Sufficiency Ministries Inc. (see also Housing, Shelter; Human Services & Public, Society Benefit-Multipurpose & Other; Mental Health, Crisis Intervention)
Rauch Inc. (see also Education & Other Instruction; Human Services & Public, Society Benefit-Multipurpose & Other)
Southern Indiana Rehab Hospital
Spina Bifida Association of Kentucky Inc.
St. Elizabeth's Catholic Charities (see also Education & Other Instruction; Housing, Shelter; Human Services & Public, Society Benefit-Multipurpose & Other; Religion Related, Spiritual Development)
St. Jude Children's Research Hospital
The Healing Place (see also Human Services & Public, Society Benefit-Multipurpose & Other; Mental Health, Crisis Intervention)
Tri-County Health Coalition of Southern Indiana Inc. (see also Community Improvement, Capacity Building; Human Services & Public, Society Benefit-Multipurpose & Other)
Vision Impaired Preschool Services (see also Education & Other Instruction)
Volunteers of America (see also Housing, Shelter; Human Services & Public, Society Benefit-Multipurpose & Other)
WaterStep (see also Unknown, Other)
XLerateHealth (see also Community Improvement, Capacity Building; Education & Other Instruction)
Yellowwood Terrace (see also Housing, Shelter)

## ***Housing, Shelter***

Housing, Shelter (n=31)
Center for Lay Ministries Inc. (see also Food, Agriculture & Nutrition; Human Services & Public, Society Benefit-Multipurpose & Other; Mental Health, Crisis Intervention)
Center for Women and Families (see also Human Services & Public, Society Benefit-Multipurpose & Other; Mental Health, Crisis Intervention)
Clark County Youth Shelter and Family Services Inc. (see also Human Services & Public, Society Benefit-Multipurpose & Other; Mental Health, Crisis Intervention; Youth Development)
Culbertson Home
Family Scholar House Inc. (see also Community Improvement, Capacity Building; Education & Other Instruction; Human Services & Public, Society Benefit-Multipurpose & Other)
Guerin Inc. (see also Health & Medical Discipline; Human Services & Public, Society Benefit-Multipurpose & Other)
Habitat for Humanity (see also Human Services & Public, Society Benefit-Multipurpose & Other)
Haven House Services Inc. (see also Human Services & Public, Society Benefit-Multipurpose & Other)
Hospitality House of Louisville (see also Human Services & Public, Society Benefit-Multipurpose & Other)
House of Ruth Inc. (see also Health & Medical Discipline; Human Services & Public, Society Benefit-Multipurpose & Other)
Jacob's Well Inc. (see also Human Services & Public, Society Benefit-Multipurpose & Other; Religion Related, Spiritual Development)
Jeffersonville Housing Authority
Jerry's Place Inc. (see also Mental Health, Crisis Intervention)
LifeSpring Health Systems Inc. (see also Health & Medical Discipline; Human Services & Public, Society Benefit-Multipurpose & Other; Mental Health, Crisis Intervention)
LifeSpring Residential Services Inc.
London Housing Group Inc.
Louisville Rescue Mission (see also Human Services & Public, Society Benefit-Multipurpose & Other; Religion Related, Spiritual Development)
Maple Manor Christian Home Inc. (see also Human Services & Public, Society Benefit-Multipurpose & Other; Religion Related, Spiritual Development; Youth Development)
New Albany Housing Authority
New Directions Housing Corporations (see also Community Improvement, Capacity Building)
Providence House (see also Human Services & Public, Society Benefit-Multipurpose & Other; Mental Health, Crisis Intervention)
Providence Self Sufficiency Ministries Inc. (see also Health & Medical Discipline; Human Services & Public, Society Benefit-Multipurpose & Other; Mental Health, Crisis Intervention)
Serenity House Inc. (see also Human Services & Public, Society Benefit-Multipurpose & Other; Mental Health, Crisis Intervention)

Southern Indiana Housing Initiative
St. Elizabeth's Catholic Charities (see also Education & Other Instruction; Health & Medical Discipline; Human Services & Public, Society Benefit-Multipurpose & Other; Religion Related, Spiritual Development)
The Housing Partnership Inc. (see also Community Improvement, Capacity Building)
The Salvation Army (see also Human Services & Public, Society Benefit-Multipurpose & Other; Religion Related, Spiritual Development)
Volunteers of America (see also Health & Medical Discipline; Human Services & Public, Society Benefit-Multipurpose & Other)
Wayside Christian Mission (see also Human Services & Public, Society Benefit: Multipurpose & Other; Religion Related, Spiritual Development)
Yellowwood Acres Inc. (see also Human Services & Public, Society Benefit-Multipurpose & Other)
Yellowwood Terrace (see also Health & Medical Discipline)

### ***Human Services & Public, Society Benefit—Multipurpose & Other*** *(see poverty and income maps)*

<b>Human Services &amp; Public, Society Benefit-Multipurpose &amp; Other (n=121)</b>
American Red Cross (see also Health & Medical Discipline)
Beach Bum Cares Inc.
Beach Mold & Tool Wishing Well Inc.
Best Buddies Indiana (see also Youth Development)
Big Brothers Big Sisters of Kentuckiana Inc. (see also Youth Development)
Blessings in a Backpack Inc.
Blue River Services Inc. (see also Community Improvement, Capacity Building)
Brandon's House Counseling Center Inc. (see also Health & Medical Discipline; Mental Health, Crisis Intervention)
Cabbage Patch Settlement House Inc. (see also Youth Development)
Catie Martin Memorial Charity
Celebration Worship Center (see also Food, Agriculture & Nutrition; Religion Related, Spiritual Development)
Centenary United Methodist Church (see also Food, Agriculture & Nutrition; Religion Related, Spiritual Development)
Center for Lay Ministries Inc. (see also Food, Agriculture & Nutrition; Housing, Shelter; Mental Health, Crisis Intervention)
Center for Women and Families (see also Housing, Shelter; Mental Health, Crisis Intervention)
Centerplace III Inc.
Charlestown Road Southern Baptist Church (see also Food, Agriculture & Nutrition; Religion Related, Spiritual Development)
Charlestown Senior Citizen Inc.
Childplace Inc. (see also Mental Health, Crisis Intervention; Youth Development)

Children and Family Advocates of Clark County Indiana Inc. (see also Crime, Legal Related & Public Safety)
Choices Life Resource Center Inc. (see also Education & Other Instruction; Health & Medical Discipline)
Christian Formation Ministries Inc. (see also Community Improvement, Capacity Building; Religion Related, Spiritual Development)
Clark County Superior Court II Drug Court Inc. (see also Crime, Legal Related & Public Safety; Government)
Clark County Youth Shelter and Family Services Inc. (see also Housing, Shelter; Mental Health, Crisis Intervention; Youth Development)
Community Action of Southern Indiana Inc. (see also Community Improvement, Capacity Building)
Community Foundation of Southern Indiana Inc. (see also Community Improvement, Capacity Building; Philanthropy, Voluntarism & Grantmaking Foundations)
Community Kitchen Inc. (see also Food, Agriculture & Nutrition)
Dare to Care Food Bank (see also Food, Agriculture & Nutrition)
Down Syndrome of Louisville Inc. (see also Health & Medical Discipline)
Dream Factory Inc. (see also Health & Medical Discipline)
Dress for Success Louisville
Eric Hall Memorial Foundation Inc.
Faith and Finances Inc. (see also Education & Other Instruction; Religion Related, Spiritual Development)
Family and Children's Place (see also Mental Health, Crisis Intervention)
Family and Friends Community Center
Family Ark Inc. (see also Mental Health, Crisis Intervention, Youth Development)
Family Health Centers of Southern Indiana (see also Health & Medical Discipline)
Family Scholar House Inc. (see also Community Improvement, Capacity Building; Education & Other Instruction; Housing, Shelter)
First Baptist Church-Charlestown (see also Food, Agriculture & Nutrition; Religion Related, Spiritual Development)
First Christian Church of Jeffersonville (see also Food, Agriculture & Nutrition; Religion Related, Spiritual Development)
First Presbyterian Church (see also Food, Agriculture & Nutrition; Religion Related, Spiritual Development)
Goodwill of Southern Indiana Inc. (see also Community Improvement, Capacity Building; Education & Other Instruction; Mental Health, Crisis Intervention)
Graceland Baptist Church (see also Food, Agriculture & Nutrition; Religion Related, Spiritual Development)
Guerin Inc. (see also Health & Medical Discipline; Housing, Shelter)
Habitat for Humanity (see also Housing, Shelter)
Harvest Chapel Church of the Nazarene (see also Food, Agriculture & Nutrition; Religion Related, Spiritual Development)
Haven House Services Inc. (see also Housing, Shelter)
Hispanic Connection of Southern Indiana Inc. (see also Crime, Legal Related & Public Safety; Education & Other Instruction; Religion Related, Spiritual Development)
Home of the Innocents (see also Community Improvement, Capacity Building; Mental Health, Crisis Intervention; Youth

Development)
Hope for Single Mothers Inc.
Hope Southern Indiana Inc. (see also Education & Other Instruction; Food, Agriculture & Nutrition; Religion Related, Spiritual Development)
Horseshoe Foundation of Floyd County Inc. (see also Community Improvement, Capacity Building; Philanthropy, Voluntarism & Grantmaking Foundations)
Hosparus Inc. (see also Health & Medical Discipline; Mental Health, Crisis Intervention)
Hospitality House of Louisville (see also Housing, Shelter)
House of Ruth Inc. (see also Health & Medical Discipline; Housing, Shelter)
Indiana Youth Institute (see also Community Improvement, Capacity Building; Philanthropy, Voluntarism & Grantmaking Foundations)
Jacob's Well Inc. (see also Housing, Shelter; Religion Related, Spiritual Development)
Jesus Cares at Exit 0 (see also Religion Related, Spiritual Development)
Kaiser Home Support Services Inc. (see also Health & Medical Discipline)
Kentucky Harvest (see also Food, Agriculture & Nutrition)
Kosair Charities (see also Health & Medical Discipline)
LifeSpan Resources Inc. (see also Health & Medical Discipline)
LifeSpring Health Systems Inc. (see also Health & Medical Discipline; Housing, Shelter; Mental Health, Crisis Intervention)
Louisville Rescue Mission (see also Housing, Shelter; Religion Related, Spiritual Development)
Make-A-Wish Foundation (see also Philanthropy, Voluntarism & Grantmaking Foundation)
Makenzie's Coat Closet Organization
Manger Baby Shop
Maple Manor Christian Home Inc. (see also Housing, Shelter; Religion Related, Spiritual Development; Youth Development)
Masonic Homes of Kentucky
Metro United Way Inc. (see also Community Improvement, Capacity Building; Education & Other Instruction)
Miles for Merry Miracles (see also Youth Development)
New Hope Services Inc. (see also Education & Other Instruction; Health & Medical Discipline)
New Life International (see also Religion Related, Spiritual Development; Unknown, Other)
Northside Christian Church (see also Food, Agriculture & Nutrition; Religion Related, Spiritual Development)
Oak Park Christian Ministries Inc. (see also Food, Agriculture & Nutrition; Religion Related, Spiritual Development)
Ohio Valley Blind Association Inc. (see also Health & Medical Discipline)
Operation Outreach
Our Lady of Perpetual Help Catholic Church (see also Food, Agriculture & Nutrition; Religion Related, Spiritual Development)

Our Place Drug and Alcohol Education Services Inc. (see also Education & Other Instruction; Health & Medical Discipline; Mental Health, Crisis Intervention)
Paralyzed Veterans of America (see also Health & Medical Discipline)
Parkinson Support Center of Kentuckiana (see also Health & Medical Discipline)
Peace of Heaven Inc.
Pearl Baptist Church (see also Food, Agriculture & Nutrition; Religion Related, Spiritual Development)
Personal Counseling Services Inc. (see also Health & Medical Discipline; Mental Health, Crisis Intervention)
Pleasant Ridge Baptist Church (see also Religion Related, Spiritual Development)
Power Ministries Inc. (see also Religion Related, Spiritual Development)
Providence House (see also Housing, Shelter; Mental Health, Crisis Intervention)
Providence Self Sufficiency Ministries Inc. (see also Health & Medical Discipline; Housing, Shelter; Mental Health, Crisis Intervention)
Rauch Inc. (see also Education & Other Instruction; Health & Medical Discipline)
Region 10 Workforce Board Inc. (see also Community Improvement, Capacity Building)
Retrouvaille of Louisville Inc. (see also Religion Related, Spiritual Development)
Rotary Foundation of New Albany Inc. (see also Community Improvement, Capacity Building)
School for Wee Ones (see also Education & Other Instruction)
Seeds of Love International Ministries Inc. (see also Religion Related, Spiritual Development; Unknown, Other)
Serenity House Inc. (see also Housing, Shelter; Mental Health, Crisis Intervention)
Silver Street United Methodist Church (see also Food, Agriculture & Nutrition; Religion Related, Spiritual Development)
Sister of Saving Souls II (see also Religion Related, Spiritual Development)
Sojourn Community Church (see also Food, Agriculture & Nutrition; Religion Related, Spiritual Development)
Sovereign Imperial Royal Court Of Indiana Inc.
Speed Memorial Church (see also Food, Agriculture & Nutrition; Religion Related, Spiritual Development)
St. Anthony of Padua Catholic Church (see also Food, Agriculture & Nutrition; Religion Related, Spiritual Development)
St. Elizabeth's Catholic Charities (see also Education & Other Instruction; Health & Medical Discipline; Housing, Shelter; Religion Related, Spiritual Development)
St. Luke's United Church (see also Food, Agriculture & Nutrition; Religion Related, Spiritual Development)
St. Mark's United Church of Christ (see also Food, Agriculture & Nutrition; Religion Related, Spiritual Development)
St. Mary's Church (see also Food, Agriculture & Nutrition; Religion Related, Spiritual Development)
St. Paul's Episcopal Church-Jeffersonville (see also Food, Agriculture & Nutrition; Religion Related, Spiritual Development)
St. Paul's Episcopal Church-New Albany (see also Food, Agriculture & Nutrition; Religion Related, Spiritual Development)
St. Vincent De Paul Society (see also Religion Related, Spiritual Development)

Strategic Indiana Providers Network (see also Community Improvement, Capacity Building)
Terry's Second Chance
The Centre for Contemplative Dialogue Inc.
The Healing Place (see also Health & Medical Discipline; Mental Health, Crisis Intervention)
The Salvation Army (see also Housing, Shelter; Religion Related, Spiritual Development)
Tri-County Health Coalition of Southern Indiana Inc. (see also Community Improvement, Capacity Building; Health & Medical Discipline)
Veterans of Foreign Wars
Volunteers of America (see also Health & Medical Discipline; Housing, Shelter)
Walnut Ridge Baptist Church (see also Food, Agriculture & Nutrition; Religion Related, Spiritual Development)
Wayside Christian Mission (see also Housing, Shelter; Religion Related, Spiritual Development)
Women's Foundation of Southern Indiana (see also Community Improvement, Capacity Building)
Wounded Warrior Project Inc.
Yellowwood Acres Inc. (see also Housing, Shelter)
YMCA of Greater Louisville (see also Recreation, Sports, Leisure; Religion Related, Spiritual Development)

### ***Mental Health, Crisis intervention*** ([\*see interactive map of Behavioral Health Services\*](#))

<b>Mental Health, Crisis Intervention (n=24)</b>
Brandon's House Counseling Center Inc. (see also Health & Medical Discipline; Human Services & Public, Society Benefit-Multipurpose & Other)
Center for Lay Ministries Inc. (see also Food, Agriculture & Nutrition; Housing, Shelter; Human Services & Public, Society Benefit-Multipurpose & Other)
Center for Women and Families (see also Housing, Shelter; Human Services & Public, Society Benefit-Multipurpose & Other)
Chances Spot (see also Animal Related)
Childplace Inc. (see also Human Services & Public, Society Benefit-Multipurpose & Other; Youth Development)
Clark County Youth Shelter and Family Services Inc. (see also Housing, Shelter; Human Services & Public, Society Benefit-Multipurpose & Other; Youth Development)
DOVE Support Ministry Inc. (see also Religion Related, Spiritual Development)
Family and Children's Place (see also Human Services & Public, Society Benefit-Multipurpose & Other)
Family Ark Inc. (see also Human Services & Public, Society Benefit-Multipurpose & Other, Youth Development)
Floyd County Token Club Inc. (see also Crime, Legal Related & Public Safety; Health & Medical Discipline)
Goodwill of Southern Indiana Inc. (see also Community Improvement, Capacity Building; Education & Other Instruction; Human Services & Public, Society Benefit-Multipurpose & Other)

Home of the Innocents (see also Community Improvement, Capacity Building; Human Services & Public, Society Benefit-Multipurpose & Other; Youth Development)
Hosparus Inc. (see also Human Services & Public, Society Benefit-Multipurpose & Other; Health & Medical Discipline)
Jerrys Place Inc. (see also Housing, Shelter)
LifeSpring Foundation of Indiana Inc. (see also Philanthropy, Voluntarism & Grantmaking Foundations)
LifeSpring Health Systems Inc. (see also Health & Medical Discipline; Housing, Shelter; Human Services & Public, Society Benefit-Multipurpose & Other)
Open Door Youth Services (see also Crime, Legal Related & Public Safety; Education & Other Instruction; Youth Development)
Opening Gates Inc. (see also Health & Medical Discipline; Recreation, Sports, Leisure)
Our Place Drug and Alcohol Education Services Inc. (see also Education & Other Instruction; Health & Medical Discipline; Human Services & Public, Society Benefit-Multipurpose & Other)
Personal Counseling Services Inc. (see also Health & Medical Discipline; Human Services & Public, Society Benefit-Multipurpose & Other)
Providence House (see also Housing, Shelter; Human Services & Public, Society Benefit-Multipurpose & Other)
Providence Self Sufficiency Ministries Inc. (see also Health & Medical Discipline; Housing, Shelter; Human Services & Public, Society Benefit-Multipurpose & Other)
Serenity House Inc. (see also Housing, Shelter; Human Services & Public, Society Benefit-Multipurpose & Other)
The Healing Place (see also Health & Medical Discipline; Human Services & Public, Society Benefit-Multipurpose & Other)

### ***Philanthropy, Voluntarism & Grantmaking Foundations***

<b>Philanthropy, Voluntarism &amp; Grantmaking Foundations (n=49)</b>
4100 Charlestown Inc.
Baptist Health Floyd Auxiliary (see also Health & Medical Discipline)
Birk Foundation
Blue Sky Foundation Inc. (see also Community Improvement, Capacity Building)
Carl H. and Mary C. Osbourn Wolford Foundation Inc.
Carlisle A. Jordan Jr Charitable Trust
Charlestown Foundation for Excellence Inc. (see also Education & Other Instruction)
Children's Hospital Foundation (see also Health & Medical Discipline)
Clark County Hospital Foundation Inc. (see also Health & Medical Discipline)
Clark County Memorial Hospital Auxiliary (see also Health & Medical Discipline)
Community Foundation of Southern Indiana Inc. (see also Community Improvement, Capacity Building; Human Services & Public, Society Benefit-Multipurpose & Other)

Conway Family Foundation Inc. (see also Religion Related, Spiritual Development)
Exponent Philanthropy
F.J. Foundation Inc.
First Savings Charitable Foundation
Floyd Memorial Foundation Inc. (see also Health & Medical Discipline)
Friends of the Culbertson Mansion Inc. (see also Arts, Culture & Humanities)
GCCS Educational Foundation Inc. (see also Education & Other Instruction)
Greater North Clark Healthcare Foundation Inc. (see also Health & Medical Discipline)
Helen Katz Charitable Trust
Horseshoe Foundation of Floyd County Inc. (see also Community Improvement, Capacity Building; Human Services & Public, Society Benefit-Multipurpose & Other)
Indiana Philanthropy Alliance (see also Education & Other Instruction; Youth Development)
Indiana University Foundation; Indiana University Southeast Foundation (see also Education & Other Instruction)
Indiana Youth Institute (see also Community Improvement, Capacity Building; Human Services & Public, Society Benefit-Multipurpose & Other)
Ivy Tech Foundation (see also Education & Other Instruction)
James A. Holt Charitable Foundation Inc.
Jane Mckelvie Charitable Trust
Jasteka Foundation Inc.
Jefferson Community & Technical College Foundation (see also Education & Other Instruction)
Jeffersonville Carnegie Library Foundation Inc. (see also Arts, Culture & Humanities; Education & Other Instruction)
Jewish Hospital & St. Mary's Foundation (see also Health & Medical Discipline)
Julie Grantz Memorial Fund
LifeSpring Foundation of Indiana Inc. (see also Mental Health, Crisis Intervention)
Louisville Library Foundation (see also Education & Other Instruction)
Make-A-Wish Foundation (see also Human Services & Public, Society Benefit-Multipurpose & Other)
New Albany-Floyd County Education Foundation Inc. (see also Education & Other Instruction)
Norton's Healthcare Foundation (see also Health & Medical Discipline)
Paul Ogle Foundation Inc. (see also Community Improvement, Capacity Building; Religion Related, Spiritual Development)
Perrin Family Park Foundation Inc. (see also Recreation, Sports, Leisure)
Philanthropy Roundtable
Project Self Discovery Irrv Trust
Purdue Research Foundation (see also Education & Other Instruction)

Rauch Foundation Inc.
Sam Shine Foundation Inc.
Samtec Associates Foundation (Social Solutions Association)
Samuel W. Townsend Memorial Trust Fund
Starlight Foundation Inc.
The Hazel & Walter T. Bales Foundation Inc. (see also Community Improvement, Capacity Building)
Unruh Charitable Foundation Inc.

## ***Recreation, Sports, Leisure***

Recreation, Sports, Leisure (n=48)
4-H Club Corporation- Clark County (see also Education & Other Instruction; Food, Agriculture & Nutrition; Youth Development)
4-H Club Corporation- Floyd County (see also Education & Other Instruction; Food, Agriculture & Nutrition; Youth Development)
Amateur Athletic Union of the United States Inc.
Blue River All Stars (see also Youth Development)
Borden Parks Department (see also Community Improvement, Capacity Building; Government)
Borden Youth League Inc. (see also Youth Development)
Census Bureau Welfare & Recreation Association (see also Government)
Clark County Soccer Association Inc. (see also Youth Development)
Clarksville Little League (see also Youth Development)
Clayton Roberson Family Foundation Inc.
Dragons Football Booster Club Inc.
Floyds Knobs Community Club Inc. (see also Community Improvement, Capacity Building)
Georgetown Optimist Club (see also Youth Development)
Glenelg Youth Sports Association Inc. (see also Youth Development)
Henryville Youth Sports Inc. (see also Youth Development)
Hoosier Hills Hoops (see also Youth Development)
Hoosier Youth Sports Association (see also Youth Development)
Indiana University Southeast Wiley Brown Basketball Camp
Jeff/GRC Little League (see also Youth Development)
Jeffersonville High School Swimming and Diving Boosters
Jeffersonville High School Tennis Boosters Club, Inc.
Jeffersonville Optimist (see also Youth Development)

Jeffersonville Youth Basketball League Inc. (see also Youth Development)
Kentuckiana Sluggers (see also Youth Development)
Little League Baseball Inc.- Highlander Youth Recreation (see also Youth Development)
Little League Baseball Inc.- New Albany LL (see also Youth Development)
National Association of Aladdin Lamp Collectors Inc.
New Albany Little League Girls Softball (see also Youth Development)
New Albany Track Club Corporation (see also Youth Development)
New Albany Youth Football League (see also Youth Development)
New Albany-Floyd County Parks Department (see also Community Improvement, Capacity Building; Government)
Opening Gates Inc. (see also Health & Medical Discipline; Mental Health, Crisis Intervention)
Pacesetter Aquatics Inc. (see also Youth Development)
Perrin Family Park Foundation Inc. (see also Philanthropy, Voluntarism & Grantmaking Foundations)
Pharaoh Men's Club Inc.
Phi Beta Psi Sorority (see also Education & Other Instruction; Unknown, Other)
Riley's Place Inc.
Riverside Aquatic Club Inc. (see also Youth Development)
Silver Creek Conservation Club, Inc.
Silver Creek Tennis Association Inc.
Silver Creek Youth Football League Corporation (see also Youth Development)
Southern Indiana Lunachicks (see also Youth Development)
Southern Indiana United Inc. (see also Youth Development)
Team Jeff Wrestling Club Inc. (see also Youth Development)
Toastmasters International- (see also Education & Other Instruction)
Trustees of Purdue University (see also Education & Other Instruction; Food, Agriculture & Nutrition; Youth Development)
West Clark Football Booster Club
YMCA of Greater Louisville (see also Human Services & Public, Society Benefit-Multipurpose & Other; Religion Related, Spiritual Development)

## ***Religion Related, Spiritual Development***

Religion Related, Spiritual Development (n=75)
ABCs of Church Management Inc.
Anthonian Association of the Friends of St. Anthony of Padua Inc.
Catholic Youth Ministries (see also Youth Development)
Catholics for Children Inc. (see also Unknown, Other)
Celebration Worship Center (see also Food, Agriculture & Nutrition; Human Services & Public, Society Benefit-Multipurpose & Other)
Centenary United Methodist Church (see also Food, Agriculture & Nutrition; Human Services & Public, Society Benefit-Multipurpose & Other)
Charlestown Road Southern Baptist Church (see also Food, Agriculture & Nutrition; Human Services & Public, Society Benefit-Multipurpose & Other)
Christian Academy of Southern Indiana (see also Education & Other Instruction)
Christian Formation Ministries Inc. (see also Community Improvement, Capacity Building; Human Services & Public, Society Benefit-Multipurpose & Other)
Clark County Ministerial Coalition (see also Community Improvement, Capacity Building)
Conway Family Foundation Inc. (see also Philanthropy, Voluntarism & Grantmaking Foundations)
CrossPoint Family Life Ministry Inc. (see also Education & Other Instruction)
Dayspring Residents Encounter Christ Inc.
DOVE Support Ministry Inc. (see also Mental Health, Crisis Intervention)
Encourager International Ministries (see also Unknown, Other)
Faith and Finances Inc. (see also Education & Other Instruction; Human Services & Public, Society Benefit-Multipurpose & Other)
First Baptist Church-Charlestown (see also Food, Agriculture & Nutrition; Human Services & Public, Society Benefit-Multipurpose & Other)
First Christian Church of Jeffersonville (see also Human Services & Public, Society Benefit-Multipurpose & Other)
First Presbyterian Church (see also Food, Agriculture & Nutrition; Human Services & Public, Society Benefit-Multipurpose & Other)
Forget Me Not Ministries Inc. (see also Unknown, Other)
Fuentes de Aguas Vivas International Fellowship Church
Grace Lutheran School (see also Education & Other Instruction)
Graceland Baptist Church (see also Food, Agriculture & Nutrition; Human Services & Public, Society Benefit-Multipurpose & Other)
Harvest Chapel Church of the Nazarene (see also Food, Agriculture & Nutrition; Human Services & Public, Society Benefit-Multipurpose & Other)
Heartsprings International Ministries Inc. (see also Health & Medical Discipline; Unknown, Other)

Hispanic Connection of Southern Indiana Inc. (see also Crime, Legal Related & Public Safety; Education & Other Instruction; Human Services & Public, Society Benefit-Multipurpose & Other)
Holy Family Catholic School (see also Education & Other Instruction)
Hope Southern Indiana Inc. (see also Education & Other Instruction; Food, Agriculture & Nutrition; Human Services & Public, Society Benefit-Multipurpose & Other)
In Heaven's Eyes Inc. (see also Food, Agriculture & Nutrition)
Institute for the Study of Religious and Anomalous Experience (see also Arts, Culture & Humanities)
Jacob's Well Inc. (see also Housing, Shelter; Human Services & Public, Society Benefit-Multipurpose & Other)
Jesus Cares at Exit 0 (see also Human Services & Public, Society Benefit-Multipurpose & Other)
Latin America Discipleship and Outreach Inc.
Louisville Rescue Mission (see also Housing, Shelter; Human Services & Public, Society Benefit-Multipurpose & Other)
Maple Manor Christian Home Inc. (see also Housing, Shelter; Human Services & Public, Society Benefit-Multipurpose & Other; Youth Development)
Mercy's Edge Ministries (see also Crime, Legal Related & Public Safety)
Mexican Christian Mission Services Inc.
New Dimensions Outreach Ministries
New Life Christian Mission Inc. (see Unknown, Other)
New Life International (see also Human Services & Public, Society Benefit-Multipurpose & Other; Unknown, Other)
Northside Christian Church (see also Food, Agriculture & Nutrition; Human Services & Public, Society Benefit-Multipurpose & Other)
Oak Park Christian Ministries Inc. (see also Food, Agriculture & Nutrition; Human Services & Public, Society Benefit-Multipurpose & Other)
Ohio Falls Holiness Association Inc.
Our Lady of Perpetual Help Catholic Church (see also Food, Agriculture & Nutrition; Human Services & Public, Society Benefit-Multipurpose & Other)
Our Lady of Perpetual Help School (see also Education & Other Instruction)
Our Lady of Providence Junior/Senior High School (see also Education & Other Instruction)
Paul Ogle Foundation Inc. (see also Community Improvement, Capacity Building; Philanthropy, Voluntarism & Grantmaking Foundations)
Pearl Baptist Church (see also Food, Agriculture & Nutrition; Human Services & Public, Society Benefit-Multipurpose & Other)
Pleasant Ridge Baptist Church (see also Human Services & Public, Society Benefit-Multipurpose & Other)
Power Ministries Inc. (see also Human Services & Public, Society Benefit-Multipurpose & Other)
Practical Shepherding Inc.
Presbyterian Foundation

Retrouvaille of Louisville Inc. (see also Human Services & Public, Society Benefit-Multipurpose & Other; Youth Development)
Sacred Heart School (see also Education & Other Instruction)
Seeds of Love International Ministries Inc. (see also Human Services & Public, Society Benefit-Multipurpose & Other; Unknown, Other)
Silver Street United Methodist Church (see also Food, Agriculture & Nutrition; Human Services & Public, Society Benefit-Multipurpose & Other)
Sister of Saving Souls II (see also Human Services & Public, Society Benefit-Multipurpose & Other)
SOAR Ministries Inc. (see also Crime, Legal Related & Public Safety; Education & Other Instruction)
Sojourn Community Church (see also Food, Agriculture & Nutrition; Human Services & Public, Society Benefit-Multipurpose & Other)
Speed Memorial Church (see also Food, Agriculture & Nutrition; Human Services & Public, Society Benefit-Multipurpose & Other)
St. Anthony of Padua Catholic Church (see also Food, Agriculture & Nutrition; Human Services & Public, Society Benefit-Multipurpose & Other)
St. Anthony of Padua Catholic School (see also Education & Other Instruction)
St. Elizabeth's Catholic Charities (see also Education & Other Instruction; Health & Medical Discipline; Housing, Shelter; Human Services & Public, Society Benefit-Multipurpose & Other)
St. Luke's United Church (see also Food, Agriculture & Nutrition; Human Services & Public, Society Benefit-Multipurpose & Other)
St. Mark's United Church of Christ (see also Food, Agriculture & Nutrition; Human Services & Public, Society Benefit-Multipurpose & Other)
St. Mary's Church (see also Food, Agriculture & Nutrition; Human Services & Public, Society Benefit-Multipurpose & Other)
St. Paul's Episcopal Church-Jeffersonville (see also Food, Agriculture & Nutrition; Human Services & Public, Society Benefit-Multipurpose & Other)
St. Paul's Episcopal Church-New Albany (see also Food, Agriculture & Nutrition; Human Services & Public, Society Benefit-Multipurpose & Other)
St. Vincent De Paul Society (see also Human Services & Public, Society Benefit-Multipurpose & Other)
The Salvation Army (see also Housing, Shelter; Human Services & Public, Society Benefit-Multipurpose & Other)
Voice of God Recordings Inc.
Walnut Ridge Baptist Church (see also Food, Agriculture & Nutrition; Human Services & Public, Society Benefit-Multipurpose & Other)
Wayside Christian Mission (see also Housing, Shelter; Human Services & Public, Society Benefit-Multipurpose & Other)
YMCA of Greater Louisville (see also Human Services & Public, Society Benefit-Multipurpose & Other; Recreation, Sports, Leisure)
Youth for Christ (see also Youth Development)

## Youth Development

Youth Development (n=50)
4-H Club Corporation- Clark County (see also Education & Other Instruction; Food, Agriculture & Nutrition; Recreation, Sports, Leisure)
4-H Club Corporation- Floyd County (see also Education & Other Instruction; Food, Agriculture & Nutrition; Recreation, Sports, Leisure)
Best Buddies Indiana (see also Human Services & Public, Society Benefit-Multipurpose & Other)
Big Brothers Big Sisters of Kentuckiana Inc. (see also Human Services & Public, Society Benefit-Multipurpose & Other)
Blue River All Stars (see also Recreation, Sports, Leisure)
Borden Youth League Inc. (see also Recreation, Sports, Leisure)
Boy Scouts of America
Boys & Girls Clubs of Kentuckiana
Cabbage Patch Settlement House Inc. (see also Human Services & Public, Society Benefit-Multipurpose & Other)
Catholic Youth Ministries (see also Religion Related, Spiritual Development)
Childplace Inc. (see also Mental Health, Crisis Intervention; Human Services & Public, Society Benefit-Multipurpose & Other)
Clark County Soccer Association Inc. (see also Recreation, Sports, Leisure)
Clark County Youth Coalition Inc.
Clark County Youth Shelter and Family Services Inc. (see also Housing, Shelter; Human Services & Public, Society Benefit-Multipurpose & Other; Mental Health, Crisis Intervention)
Clark-Floyd County Child Abuse Prevention Council Inc. (see also Crime, Legal Related & Public Safety)
Clarksville Little League (see also Recreation, Sports, Leisure)
Comics for Kids
Family Ark Inc. (see also Human Services & Public, Society Benefit-Multipurpose & Other, Mental Health, Crisis Intervention)
Friends of Open Door Youth Services Inc. (Voices 4 Youth)
Fuzzy's Charities Inc.
Georgetown Optimist Club (see also Recreation, Sports, Leisure)
Girl Scouts of Kentuckiana
Glenelg Youth Sports Association Inc. (see also Recreation, Sports, Leisure)
Henryville Youth Sports Inc. (see also Recreation, Sports, Leisure)
Home of the Innocents (see also Community Improvement, Capacity Building; Human Services & Public, Society Benefit-Multipurpose & Other; Mental Health, Crisis Intervention)
Hoosier Hills Hoops (see also Recreation, Sports, Leisure)

Hoosier Youth Sports Association (see also Recreation, Sports, Leisure)
Indiana Philanthropy Alliance (see also Education & Other Instruction; Philanthropy, Voluntarism & Grantmaking Foundations)
Jeff/GRC Little League (see also Recreation, Sports, Leisure)
Jeffersonville Optimist (see also Recreation, Sports, Leisure)
Jeffersonville Youth Basketball League Inc. (see also Recreation, Sports, Leisure)
Junior Achievement of Kentuckiana Inc.
Kentuckiana Sluggers (see also Recreation, Sports, Leisure)
Little League Baseball Inc.- Highlander Youth Recreation (see also Recreation, Sports, Leisure)
Little League Baseball Inc.- New Albany LL (see also Recreation, Sports, Leisure)
Maple Manor Christian Home Inc. (see also Housing, Shelter; Human Services & Public, Society Benefit-Multipurpose & Other; Religion Related, Spiritual Development)
Miles for Merry Miracles (see also Human Services & Public, Society Benefit-Multipurpose & Other)
New Albany Little League Girls Softball (see also Recreation, Sports, Leisure)
New Albany Track Club Corporation (see also Recreation, Sports, Leisure)
New Albany Youth Football League (see also Recreation, Sports, Leisure)
Open Door Youth Services (see also Crime, Legal Related & Public Safety; Education & Other Instruction; Mental Health, Crisis Intervention)
Pacesetter Aquatics Inc. (see also Recreation, Sports, Leisure)
Redeem the Dream Inc. (see also Unknown, Other)
Riverside Aquatic Club Inc. (see also Recreation, Sports, Leisure)
Silver Creek Youth Football League Corporation (see also Recreation, Sports, Leisure)
Southern Indiana Lunachicks (see also Recreation, Sports, Leisure)
Southern Indiana United Inc. (see also Recreation, Sports, Leisure)
Trustees of Purdue University (see also Education & Other Instruction; Food, Agriculture & Nutrition; Recreation, Sports, Leisure)
Youth Count
Youth for Christ (see also Religion Related, Spiritual Development)

## ***Unknown, Other***

Unknown, Other (n=17)
Catholics for Children Inc. (see also Religion Related, Spiritual Development)
Clarksville Sister Cities Association (see also Community Improvement, Capacity Building)
Encourager International Ministries (see also Religion Related, Spiritual Development)
Falls Cities Sertoma Club (see also Community Improvement, Capacity Building)
Forget Me Not Ministries Inc. (see also Religion Related, Spiritual Development)
Fuentes de Aguas Vivas International Fellowship Church (see also Religion Related, Spiritual Development)
Heartsprings International Ministries Inc. (see also Health & Medical Discipline; Religion Related, Spiritual Development)
International Sustainability Fund
Mexican Christian Mission Services Inc. (see also Religion Related, Spiritual Development)
New Life Christian Mission Inc. (see also Religion Related, Spiritual Development)
New Life International (see also Human Services & Public, Society Benefit-Multipurpose & Other; Religion Related, Spiritual Development)
Phi Beta Psi Sorority (see also Education & Other Instruction; Recreation, Sports, Leisure)
Right to Life of Southern Indiana Education Fund
Seeds of Love International Ministries Inc. (see also Human Services & Public, Society Benefit-Multipurpose & Other; Religion Related, Spiritual Development)
Tek4Kids Inc.
Tri-Star Alliance Inc.
WaterStep (see also Human Services & Public, Society Benefit-Multipurpose & Other)

\*Unknown, Other includes organizations that either did not report sector or organization activities, this information was not provided, or they operate in other various areas of interests, such as: Civil Rights, Social Action and Advocacy; International, Foreign Affairs and National Security; and Science and Technology Research Institute, Services.

## Appendix B: Alphabetical Index of Kentuckiana Nonprofits

	Animal Related	Arts, Culture & Humanities	Community Improvement, Capacity Building	Crime, Legal Related & Public Safety	Education & Other Instruction	Environmental Quality, Protection & Beautification	Food, Agriculture & Nutrition	Government	Health & Medical Discipline	Housing, Shelter	Human Services & Public, Society Benefit: Multipurpose & Other	Mental Health, Crisis Intervention	Philanthropy, Voluntarism & Grantmaking Foundations	Recreation, Sports, Leisure	Religion Related, Spiritual Development	Youth Development	Unknown, Other
<a href="#">21st Century Parks</a>			X			X											
<a href="#">21st Century Scholars</a>					X												
<a href="#">4100 Charlestown Inc.</a>													X				
<a href="#">4-H Club Corporation-Clark County</a>					X		X							X		X	
<a href="#">4-H Club Corporation-Floyd County</a>					X		X							X		X	
<a href="#">ABCs of Church Management Inc.</a>															X		
<a href="#">Actors Theatre of Louisville</a>		X															
<a href="#">Alzheimer's Association</a>			X						X								
<a href="#">Amateur Athletic Union of the United States Inc.</a>														X			
<a href="#">American Cancer Society</a>									X								
<a href="#">American Inns of Court Foundation</a>				X													
<a href="#">American Red Cross</a>									X		X						
<a href="#">Animals Protection</a>	X																

[illegible]

[illegible]

Unknown, Other	Youth Development	Religion Related, Spiritual Development	Recreation, Sports, Leisure	Philanthropy, Voluntarism & Grantmaking Foundations	Mental Health, Crisis Intervention	Human Services & Public, Society Benefit: Multipurpose & Other	Housing, Shelter	Health & Medical Discipline	Government	Food, Agriculture & Nutrition	Environmental Quality, Protection & Beautification	Education & Other Instruction	Crime, Legal Related & Public Safety	Community Improvement, Capacity Building	Arts, Culture & Humanities	Animal Related	
																	<a href="#">Kentuckiana</a>
					X	X		X									<a href="#">Brandon's House Counseling Center Inc.</a>
												X					<a href="#">Bridgepoint Elementary School</a>
	X					X											<a href="#">Cabbage Patch Settlement House Inc.</a>
								X									<a href="#">Camp Quality Kentuckiana</a>
								X				X					<a href="#">Cancer Research &amp; Education Fund Inc.</a>
															X		<a href="#">Cardinal Ritter Birthplace Foundation Inc.</a>
																	<a href="#">Carl H. and Mary C. Osbourn Wolford Foundation Inc.</a>
																	<a href="#">Carlisle A. Jordan Jr Charitable Trust</a>
															X		<a href="#">Carnegie Center for Art &amp; History Inc.</a>
	X	X															Catholic Youth Ministries

Unknown, Other	Youth Development	Religion Related, Spiritual Development	Recreation, Sports, Leisure	Philanthropy, Voluntarism & Grantmaking Foundations	Mental Health, Crisis Intervention	Human Services & Public, Society Benefit: Multipurpose & Other	Housing, Shelter	Health & Medical Discipline	Government	Food, Agriculture & Nutrition	Environmental Quality, Protection & Beautification	Education & Other Instruction	Crime, Legal Related & Public Safety	Community Improvement, Capacity Building	Arts, Culture & Humanities	Animal Related	
X		X															Catholics for Children Inc.
						X											Catie Martin Memorial Charity
																X	Cats Meow Rescue Inc.
		X				X				X							Celebration Worship Center
			X						X								Census Bureau Welfare & Recreation Association
		X				X				X							Centenary United Methodist Church
					X	X	X			X							Center for Lay Ministries Inc.
					X	X	X										Center for Women and Families
						X										X	Centerplace III Inc.
					X											X	Chances Spot
												X					Charles L. Shedd Kentucky Association
				X								X					Charlestown Foundation for Excellence Inc.
												X					Charlestown High School



[illegible]

	Unknown, Other	Youth Development	Religion Related, Spiritual Development	Recreation, Sports, Leisure	Philanthropy, Voluntarism & Grantmaking Foundations	Mental Health, Crisis Intervention	Human Services & Public, Society Benefit: Multipurpose & Other	Housing, Shelter	Health & Medical Discipline	Government	Food, Agriculture & Nutrition	Environmental Quality, Protection & Beautification	Education & Other Instruction	Crime, Legal Related & Public Safety	Community Improvement, Capacity Building	Arts, Culture & Humanities	Animal Related	
<a href="#">Clark County Soccer Association Inc.</a>		X		X														
<a href="#">Clark County Superior Court II Drug Court Inc.</a>							X			X				X	X			
<a href="#">Clark County Youth Coalition Inc.</a>		X																
<a href="#">Clark County Youth Shelter and Family Services Inc.</a>		X				X	X	X										
<a href="#">Clark Memorial Hospital</a>									X									
<a href="#">Clark-Floyd County Child Abuse Prevention Council Inc.</a>		X												X				
<a href="#">Clarksville Community School Corporation</a>													X					
<a href="#">Clarksville High School</a>													X					
<a href="#">Clarksville Little League</a>		X		X														
<a href="#">Clarksville Little Theatre Company Inc.</a>																X		
<a href="#">Clarksville Middle School</a>													X					

[illegible]

[illegible]

	Unknown, Other	Youth Development	Religion Related, Spiritual Development	Recreation, Sports, Leisure	Philanthropy, Voluntarism & Grantmaking Foundations	Mental Health, Crisis Intervention	Human Services & Public, Society Benefit: Multipurpose & Other	Housing, Shelter	Health & Medical Discipline	Government	Food, Agriculture & Nutrition	Environmental Quality, Protection & Beautification	Education & Other Instruction	Crime, Legal Related & Public Safety	Community Improvement, Capacity Building	Arts, Culture & Humanities	Animal Related	
Dress for Success Louisville							X											
East Spring Street Neighborhood Association Inc.															X			
Edwardsville Community Inc.															X			
Encourager International Ministries	X		X															
Epilepsy Foundation of Kentuckiana									X									
Equine Rescue League of Southern Indiana Inc.																	X	
Eric Hall Memorial Foundation Inc.							X											
Ethan Bennett Memorial Scholarship Fund													X					
Exponent Philanthropy					X													
F.J. Foundation Inc.					X													
Fairmont Elementary School													X					
Faith and Finances Inc.			X				X						X					

	Unknown, Other	Youth Development	Religion Related, Spiritual Development	Recreation, Sports, Leisure	Philanthropy, Voluntarism & Grantmaking Foundations	Mental Health, Crisis Intervention	Human Services & Public, Society Benefit: Multipurpose & Other	Housing, Shelter	Health & Medical Discipline	Government	Food, Agriculture & Nutrition	Environmental Quality, Protection & Beautification	Education & Other Instruction	Crime, Legal Related & Public Safety	Community Improvement, Capacity Building	Arts, Culture & Humanities	Animal Related	
Falls Cities Sertoma Club	X														X			
Falls of the Ohio												X	X					
Falls of the Ohio Foundation Inc.												X				X		
Families for Fathers Inc.									X									
Family and Children's Place						X	X											
Family and Friends Community Center							X											
Family Ark Inc.		X				X	X											
Family Health Centers of Southern Indiana							X		X									
Family Scholar House Inc.							X	X					X		X			
Fat Heads Rescue Inc.													X				X	
FC Star Boosters Inc.													X			X		
FC Star Singers Inc.													X			X		
First Baptist Church-Charlestown			X				X				X							
First Christian Church of Jeffersonville			X				X											
First Presbyterian Church			X				X				X							

Unknown, Other	Youth Development	Religion Related, Spiritual Development	Recreation, Sports, Leisure	Philanthropy, Voluntarism & Grantmaking Foundations	Mental Health, Crisis Intervention	Human Services & Public, Society Benefit: Multipurpose & Other	Housing, Shelter	Health & Medical Discipline	Government	Food, Agriculture & Nutrition	Environmental Quality, Protection & Beautification	Education & Other Instruction	Crime, Legal Related & Public Safety	Community Improvement, Capacity Building	Arts, Culture & Humanities	Animal Related
<a href="#">First Savings Charitable Foundation</a>				X												
<a href="#">Floyd Action Network</a>															X	
<a href="#">Floyd Central Band Boosters</a>												X				
<a href="#">Floyd Central High School</a>												X				
<a href="#">Floyd Central High School Theater</a>															X	
<a href="#">Floyd County</a>									X							
<a href="#">Floyd County Animal Rescue League</a>																X
<a href="#">Floyd County Community Action- Head Start</a>												X				
<a href="#">Floyd County Community Corrections</a>													X			
<a href="#">Floyd County Emergency Management Agency</a>									X				X	X		
<a href="#">Floyd County Historical Society Inc.</a>															X	
<a href="#">Floyd County Humane Society Inc. of New</a>												X				X

[illegible]

	Unknown, Other	Youth Development	Religion Related, Spiritual Development	Recreation, Sports, Leisure	Philanthropy, Voluntarism & Grantmaking Foundations	Mental Health, Crisis Intervention	Human Services & Public, Society Benefit: Multipurpose & Other	Housing, Shelter	Health & Medical Discipline	Government	Food, Agriculture & Nutrition	Environmental Quality, Protection & Beautification	Education & Other Instruction	Crime, Legal Related & Public Safety	Community Improvement, Capacity Building	Arts, Culture & Humanities	Animal Related	
<a href="#">Friends of Fairview</a>															X	X		
<a href="#">Friends of Open Door Youth Services Inc. (Voices 4 Youth)</a>		X																
<a href="#">Friends of the Culbertson Mansion Inc.</a>					X											X		
<a href="#">Friends of the New Albany-Floyd County Public Library Inc.</a>													X					
<a href="#">Friends of the Ohio River Greenway Inc.</a>												X						
<a href="#">Friends of Town Clock Church</a>																X		
<a href="#">Fuentes de Aguas Vivas International Fellowship Church</a>	X		X															
<a href="#">Fund for the Arts</a>																X		
<a href="#">Fuzzy's Charities Inc.</a>		X																
<a href="#">GCCS Educational Foundation Inc.</a>					X								X					
<a href="#">George Rogers Clark</a>												X				X		

	Unknown, Other	Youth Development	Religion Related, Spiritual Development	Recreation, Sports, Leisure	Philanthropy, Voluntarism & Grantmaking Foundations	Mental Health, Crisis Intervention	Human Services & Public, Society Benefit: Multipurpose & Other	Housing, Shelter	Health & Medical Discipline	Government	Food, Agriculture & Nutrition	Environmental Quality, Protection & Beautification	Education & Other Instruction	Crime, Legal Related & Public Safety	Community Improvement, Capacity Building	Arts, Culture & Humanities	Animal Related	
<a href="#">Land Trust Inc.</a>																		
<a href="#">Georgetown Elementary School</a>													X					
<a href="#">Georgetown Optimist Club</a>		X		X														
<a href="#">Gilda's Club Louisville</a>									X									
<a href="#">Girl Scouts of Kentuckiana</a>		X																
<a href="#">Glennelg Youth Sports Association Inc.</a>		X		X														
<a href="#">Goodwill of Southern Indiana Inc.</a>						X	X						X		X			
<a href="#">Grace Lutheran School</a>			X										X					
<a href="#">Graceland Baptist Church</a>			X				X				X							
<a href="#">Grant Line Elementary School</a>													X					
<a href="#">Greater Clark County Schools</a>													X					
<a href="#">Greater Community Council Inc.</a>															X			
<a href="#">Greater Louisville Music Teacher Association</a>													X					



[illegible]

Unknown, Other	Youth Development	Religion Related, Spiritual Development	Recreation, Sports, Leisure	Philanthropy, Voluntarism & Grantmaking Foundations	Mental Health, Crisis Intervention	Human Services & Public, Society Benefit: Multipurpose & Other	Housing, Shelter	Health & Medical Discipline	Government	Food, Agriculture & Nutrition	Environmental Quality, Protection & Beautification	Education & Other Instruction	Crime, Legal Related & Public Safety	Community Improvement, Capacity Building	Arts, Culture & Humanities	Animal Related	
																	<a href="#">Inc.</a>
	X		X														<a href="#">Hoosier Hills Hoops</a>
	X		X														<a href="#">Hoosier Youth Sports Association</a>
						X											<a href="#">Hope for Single Mothers Inc.</a>
		X				X				X							<a href="#">Hope Southern Indiana Inc.</a>
				X		X								X			<a href="#">Horseshoe Foundation of Floyd County Inc.</a>
					X	X		X									<a href="#">Hosparus Inc.</a>
						X	X										<a href="#">Hospitality House of Louisville</a>
						X	X	X									<a href="#">House of Ruth Inc.</a>
															X		<a href="#">Howard Steamboat Museum</a>
												X				X	<a href="#">Humane Association of Clark County Inc.</a>
															X		<a href="#">Idea Festival</a>
		X								X							<a href="#">In Heaven's Eyes Inc.</a>
												X					<a href="#">Indiana Congress of</a>

[illegible]





Unknown, Other	Youth Development	Religion Related, Spiritual Development	Recreation, Sports, Leisure	Philanthropy, Voluntarism & Grantmaking Foundations	Mental Health, Crisis Intervention	Human Services & Public, Society Benefit: Multipurpose & Other	Housing, Shelter	Health & Medical Discipline	Government	Food, Agriculture & Nutrition	Environmental Quality, Protection & Beautification	Education & Other Instruction	Crime, Legal Related & Public Safety	Community Improvement, Capacity Building	Arts, Culture & Humanities	Animal Related	
																	<a href="#">Basketball League Inc.</a>
					X		X										<a href="#">Jerry's Place Inc.</a>
		X				X											<a href="#">Jesus Cares at Exit 0</a>
				X				X									<a href="#">Jewish Hospital &amp; St. Mary's Foundation</a>
								X									<a href="#">John Kenyon Eye Research Foundation Inc.</a>
												X					<a href="#">Jonathan Jennings Elementary School</a>
												X					<a href="#">Jonathan Jennings Elementary School PTO</a>
				X													<a href="#">Julie Grantz Memorial Fund</a>
	X																<a href="#">Junior Achievement of Kentuckiana Inc.</a>
						X		X									<a href="#">Kaiser Home Support Services Inc.</a>
										X							<a href="#">Kans for Kids</a>
											X			X			<a href="#">Keep New Albany Clean and Green</a>
																X	<a href="#">Kentuckiana Animal</a>



[illegible]

[illegible]

[illegible]

	Unknown, Other	Youth Development	Religion Related, Spiritual Development	Recreation, Sports, Leisure	Philanthropy, Voluntarism & Grantmaking Foundations	Mental Health, Crisis Intervention	Human Services & Public, Society Benefit: Multipurpose & Other	Housing, Shelter	Health & Medical Discipline	Government	Food, Agriculture & Nutrition	Environmental Quality, Protection & Beautification	Education & Other Instruction	Crime, Legal Related & Public Safety	Community Improvement, Capacity Building	Arts, Culture & Humanities	Animal Related	
<a href="#">Monroe Township Volunteer Fire Department</a>										X				X	X			
<a href="#">Mount Tabor Elementary School</a>													X					
<a href="#">Nadus Films</a>																X		
<a href="#">National Association of Aladdin Lamp Collectors Inc.</a>				X														
<a href="#">National Gerontological Nursing Association Inc. (Louisville Area Chapter)</a>									X				X					
<a href="#">National Society Colonial Dames XVII Century</a>													X			X		
<a href="#">National Society of the Daughters of the American Revolution</a>													X			X		
<a href="#">National Society United States Daughters of 1812</a>																X		
<a href="#">Navilleton Schoolhouse Inc.</a>																X		
<a href="#">Network Center for</a>															X			

[illegible]

	Unknown, Other	Youth Development	Religion Related, Spiritual Development	Recreation, Sports, Leisure	Philanthropy, Voluntarism & Grantmaking Foundations	Mental Health, Crisis Intervention	Human Services & Public, Society Benefit: Multipurpose & Other	Housing, Shelter	Health & Medical Discipline	Government	Food, Agriculture & Nutrition	Environmental Quality, Protection & Beautification	Education & Other Instruction	Crime, Legal Related & Public Safety	Community Improvement, Capacity Building	Arts, Culture & Humanities	Animal Related	
<a href="#">New Albany-Floyd County Education Foundation Inc.</a>					X								X					
<a href="#">New Albany-Floyd County Parks Department</a>				X						X					X			
<a href="#">New Albany-Floyd County Schools</a>													X					
<a href="#">New Dimensions Outreach Ministries</a>			X															
<a href="#">New Directions Housing Corporations</a>								X							X			
<a href="#">New Hope Services Inc.</a>							X		X				X					
<a href="#">New Life Christian Mission Inc.</a>	X		X															
<a href="#">New Life International</a>	X		X				X											
<a href="#">New Washington Alumni Scholarship Association Inc.</a>													X					
<a href="#">New Washington Band Boosters</a>													X					
<a href="#">New Washington</a>													X					

Unknown, Other	Youth Development	Religion Related, Spiritual Development	Recreation, Sports, Leisure	Philanthropy, Voluntarism & Grantmaking Foundations	Mental Health, Crisis Intervention	Human Services & Public, Society Benefit: Multipurpose & Other	Housing, Shelter	Health & Medical Discipline	Government	Food, Agriculture & Nutrition	Environmental Quality, Protection & Beautification	Education & Other Instruction	Crime, Legal Related & Public Safety	Community Improvement, Capacity Building	Arts, Culture & Humanities	Animal Related
<a href="#">Elementary School</a>																
<a href="#">New Washington Middle/High School</a>												X				
<a href="#">Northaven Elementary School</a>												X				
<a href="#">Northaven Elementary School PTO</a>												X				
<a href="#">Northside Christian Church</a>		X				X				X						
<a href="#">Norton's Healthcare Foundation</a>				X				X								
<a href="#">Nucleus Kentucky's Life Sciences &amp; Innovation</a>														X		
<a href="#">Oak Park Christian Ministries Inc.</a>		X				X				X						
<a href="#">Ohio Falls Holiness Association Inc.</a>		X														
<a href="#">Ohio River Greenway Inc.</a>											X			X		
<a href="#">Ohio Valley Blind Association Inc.</a>						X		X								
<a href="#">Ohio Valley Creative</a>											X			X	X	

	Unknown, Other	Youth Development	Religion Related, Spiritual Development	Recreation, Sports, Leisure	Philanthropy, Voluntarism & Grantmaking Foundations	Mental Health, Crisis Intervention	Human Services & Public, Society Benefit: Multipurpose & Other	Housing, Shelter	Health & Medical Discipline	Government	Food, Agriculture & Nutrition	Environmental Quality, Protection & Beautification	Education & Other Instruction	Crime, Legal Related & Public Safety	Community Improvement, Capacity Building	Arts, Culture & Humanities	Animal Related	
<a href="#">Energy Inc.</a>																		
<a href="#">Open Door Youth Services</a>		X				X							X	X				
<a href="#">Opening Gates Inc.</a>				X		X			X									
<a href="#">Operation Outreach</a>							X											
<a href="#">OSI Foundation Inc.</a>															X			
<a href="#">Our Lady of Perpetual Help Catholic Church</a>			X				X				X							
<a href="#">Our Lady of Perpetual Help School</a>			X										X					
<a href="#">Our Lady of Providence Junior/Senior High School</a>			X										X					
<a href="#">Our Place Drug and Alcohol Education Services Inc.</a>						X	X		X				X					
<a href="#">Pacesetter Aquatics Inc.</a>		X		X														
<a href="#">Paralyzed Veterans of America</a>							X		X									
<a href="#">Parkinson Support Center of Kentuckiana</a>							X		X									
<a href="#">Parkview Middle School</a>													X					
<a href="#">Parkwood Elementary</a>													X					

Unknown, Other	Youth Development	Religion Related, Spiritual Development	Recreation, Sports, Leisure	Philanthropy, Voluntarism & Grantmaking Foundations	Mental Health, Crisis Intervention	Human Services & Public, Society Benefit: Multipurpose & Other	Housing, Shelter	Health & Medical Discipline	Government	Food, Agriculture & Nutrition	Environmental Quality, Protection & Beautification	Education & Other Instruction	Crime, Legal Related & Public Safety	Community Improvement, Capacity Building	Arts, Culture & Humanities	Animal Related	
																	<a href="#">School</a>
								X									<a href="#">Partners In Breast Cancer Survival Inc.</a>
		X		X										X			<a href="#">Paul Ogle Foundation Inc.</a>
															X		<a href="#">Paul W. Ogle Cultural &amp; Community Center</a>
						X											<a href="#">Peace of Heaven Inc.</a>
		X				X				X							<a href="#">Pearl Baptist Church</a>
			X	X													<a href="#">Perrin Family Park Foundation Inc.</a>
					X	X		X									<a href="#">Personal Counseling Services Inc.</a>
			X														<a href="#">Pharaoh Men's Club Inc.</a>
X			X									X					<a href="#">Phi Beta Psi Sorority</a>
				X													<a href="#">Philanthropy Roundtable</a>
																X	<a href="#">Piece of My Heart Rescue Inc.</a>
														X			<a href="#">Pilot Club of New Albany</a>
												X					<a href="#">Pirate Pride Booster Club</a>
		X				X											<a href="#">Pleasant Ridge Baptist Church</a>



[illegible]

[illegible]

Unknown, Other	Youth Development	Religion Related, Spiritual Development	Recreation, Sports, Leisure	Philanthropy, Voluntarism & Grantmaking Foundations	Mental Health, Crisis Intervention	Human Services & Public, Society Benefit: Multipurpose & Other	Housing, Shelter	Health & Medical Discipline	Government	Food, Agriculture & Nutrition	Environmental Quality, Protection & Beautification	Education & Other Instruction	Crime, Legal Related & Public Safety	Community Improvement, Capacity Building	Arts, Culture & Humanities	Animal Related	
<a href="#">International Ministries Inc.</a>																	
<a href="#">Sellersburg Volunteer Fire Department Inc.</a>									X				X	X			
<a href="#">Serenity House Inc.</a>					X	X	X										
<a href="#">Shamrock Pet Foundation, Inc.</a>																X	
<a href="#">Silver Creek Career Academy Programs Inc.</a>												X					
<a href="#">Silver Creek Conservation Club, Inc.</a>			X														
<a href="#">Silver Creek Elementary School</a>												X					
<a href="#">Silver Creek Elementary School PTO</a>												X					
<a href="#">Silver Creek High School</a>												X					
<a href="#">Silver Creek Middle School</a>												X					
<a href="#">Silver Creek Middle School PTO</a>												X					
<a href="#">Silver Creek Primary School</a>												X					
<a href="#">Silver Creek Primary</a>												X					

	Unknown, Other	Youth Development	Religion Related, Spiritual Development	Recreation, Sports, Leisure	Philanthropy, Voluntarism & Grantmaking Foundations	Mental Health, Crisis Intervention	Human Services & Public, Society Benefit: Multipurpose & Other	Housing, Shelter	Health & Medical Discipline	Government	Food, Agriculture & Nutrition	Environmental Quality, Protection & Beautification	Education & Other Instruction	Crime, Legal Related & Public Safety	Community Improvement, Capacity Building	Arts, Culture & Humanities	Animal Related	
School PTO				X														
Silver Creek Tennis Association Inc.				X														
Silver Creek Youth Football League Corporation		X		X														
Silver Hills Historical Society																X		
Silver Street United Methodist Church			X				X				X							
Sister of Saving Souls II			X				X											
Slate Run Elementary School													X					
SOAR Ministries Inc.			X										X					
Sojourn Community Church			X				X				X							
South Louisville Community Center															X			
Southern Indiana Animal Rescue Inc.																	X	
Southern Indiana Botanical Society Inc.												X						

	Unknown, Other	Youth Development	Religion Related, Spiritual Development	Recreation, Sports, Leisure	Philanthropy, Voluntarism & Grantmaking Foundations	Mental Health, Crisis Intervention	Human Services & Public, Society Benefit: Multipurpose & Other	Housing, Shelter	Health & Medical Discipline	Government	Food, Agriculture & Nutrition	Environmental Quality, Protection & Beautification	Education & Other Instruction	Crime, Legal Related & Public Safety	Community Improvement, Capacity Building	Arts, Culture & Humanities	Animal Related	
<a href="#">Southern Indiana Housing Initiative</a>								X										
<a href="#">Southern Indiana Lunachicks</a>		X		X														
<a href="#">Southern Indiana Minority Enterprise Initiative Inc.</a>															X			
<a href="#">Southern Indiana Pro Bono Referrals Inc.</a>														X	X			
<a href="#">Southern Indiana Quilt Guild</a>																X		
<a href="#">Southern Indiana Rehab Hospital</a>									X									
<a href="#">Southern Indiana United Inc.</a>		X		X														
<a href="#">Sovereign Imperial Royal Court Of Indiana Inc.</a>							X											
<a href="#">Spalding University</a>													X					
<a href="#">Speed Memorial Church</a>			X				X				X							
<a href="#">Spina Bifida Association of Kentucky Inc.</a>									X									
<a href="#">Spring Hill Elementary</a>													X					

[illegible]

[illegible]

Unknown, Other	Youth Development	Religion Related, Spiritual Development	Recreation, Sports, Leisure	Philanthropy, Voluntarism & Grantmaking Foundations	Mental Health, Crisis Intervention	Human Services & Public, Society Benefit: Multipurpose & Other	Housing, Shelter	Health & Medical Discipline	Government	Food, Agriculture & Nutrition	Environmental Quality, Protection & Beautification	Education & Other Instruction	Crime, Legal Related & Public Safety	Community Improvement, Capacity Building	Arts, Culture & Humanities	Animal Related	
		X				X	X										<a href="#">The Salvation Army</a>
															X		<a href="#">The What If? Theatre Company</a>
												X					<a href="#">Thomas Jefferson Elementary School</a>
			X									X					<a href="#">Toastmasters International</a>
									X					X			<a href="#">Town of Borden</a>
									X					X			<a href="#">Town of Charlestown</a>
									X					X			<a href="#">Town of Georgetown</a>
									X					X			<a href="#">Town of Greenville</a>
									X					X			<a href="#">Town of Sellersburg</a>
									X					X			<a href="#">Town of Utica</a>
											X						<a href="#">Trash Force Inc.</a>
						X		X						X			<a href="#">Tri-County Health Coalition of Southern Indiana Inc.</a>
X																	<a href="#">Tri-Star Alliance Inc.</a>

[illegible]

<sup>2</sup> Clubs and organizations filed under Trustees of Purdue include: Floyd County 4-H Junior Leaders; Hazelwood Bullpups; Hippiity Hop 4-H Rabbit Club; Optimist 4-H Club; Silver Spurs; South Central Leftovers 4-H Club.

[illegible]



**Community Foundation**  
of Southern Indiana

*Partner. Resource. Steward.*

4108 Charlestown Road, New Albany, IN 47150

P: 812.948.4662

F: 812.948.4678

[CFSouthernIndiana.com](http://CFSouthernIndiana.com)



Confirmed in Compliance with National  
Standards for U.S. Community Foundations